

Classic Lights

CLASSIC FORM,
NEXT-GENERATION FUNCTION

TURNKEY SERVICE

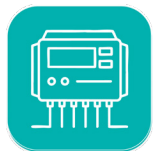
Our team of engineers, installers, and maintenance professionals ensure your project flows seamlessly and your lights perform optimally year-round.

- Designed to meet IES Standards and local codes
- We offer guidance through the permitting process
- Quick installation for immediate lighting benefits
- 24/7 monitoring: proactive, routine maintenance

COMPLETE LIGHTING SOLUTION

Two sizes for multiple applications from streets and amenities to parks and paths.

Installation takes minutes



HIGH
EFFICIENCY
CONTROLLER



LiFePO4
BATTERY



HIGH QUALITY
LED



IP66



WIRELESS



Streetleaf **AVE**
for local
single-lane roads



Streetleaf **BLVD**
for collector
double-lane roads





CLASSIC STYLING

With a bell-shaped fixture, crozier-arched arm, and glare-blocking louvers, our CLASSIC lights bring timeless charm to any nightscape.



BI-FACIAL SOLAR PANEL

- Captures direct and reflected light
- 25 year lifespan

SMART-CONTROL NODE

- 24/7 remote monitoring
- Performance data
- Storm mode capability

ALUMINUM POLE

- Direct burial
- Heights from 15-26 feet
- High-grade powder coating

REMOTE MONITORING



- IoT-connected
- Proactive monitoring and adjustments
- Performance Intel

METAL BIRD DETERRENT

- Prevents birds from perching/nesting
- Protects panel from droppings and debris to maintain maximum solar energy absorption

LONG-LASTING LITHIUM BATTERIES

- Safe LiFePO4 chemistry
- Upwards of 2000 full cycles
- 10 year lifespan

GLARE-BLOCKING LOUVERS

- Integrated optical shield to reduce light spill and minimize glare.

BEST IN CLASS LED LIGHTHEAD

- 3000K color temperature
- Consistent light color
- Lasts over 100,000 hours

CROZIER-ARCHED ARM & BELL-SHAPED FIXTURE

- Style-focused features to add visual appeal