

THE 2024 VINTAGEVIEW SOURCE GUIDE

2024



VINTAGEVIEW®
MOVING WINE STORAGE FORWARD

A LETTER FROM THE CEO

This distinctive wine rack I am holding has our story welded into every precise curve.

The W Series Wine Rack is the metal storage option that fundamentally changed the way design/build professionals approached the wine cellar when we debuted it in 2001. Its mix of quality and beauty continues to allow talented folks like you to creatively move wine rooms out of basements and into architectural features in homes and restaurants.

Not only is it the original label-forward wine rack, but it serves as the foundation for VintageView, the most innovative bottle storage company in the world. Don't be fooled by imitations. VintageView remains the mark of excellence.

As we celebrate our 23rd year serving the industry, we use our 2024 Source Book as a chance to tell the story of our evolution as your best partner in wine cellaring. Our first wine rack hasn't changed much over the years — why mess with perfection?!? — but we sure have, bringing dozens of other superior products to your repertoire.

Follow our timeline in the pages ahead to see how far that one elegant wine rack has pushed the envelope. Enjoy dozens of sophisticated, real-world inspiration examples created by the most talented people in the business. Then, please connect to us with ideas, questions, projects, and anything else on your mind.

Because we know that the world's best metal wine racks are only as good as advertised if we back them with world-class support.

Let's raise a glass to inspiring design.



Charles Malek
CEO



W Series
4

Vino Series
14

Case & Crate
25

Evolution
29

Helix
52

Specifications
58

Resources
66

[2001]

W SERIES

The original label-forward wine rack, inspired by a desire to visually connect with beloved bottles, stands the test of time. The W Series Wine Rack is the benchmark for inspiring wine cellar design.



 = finish  = bottle capacity
528

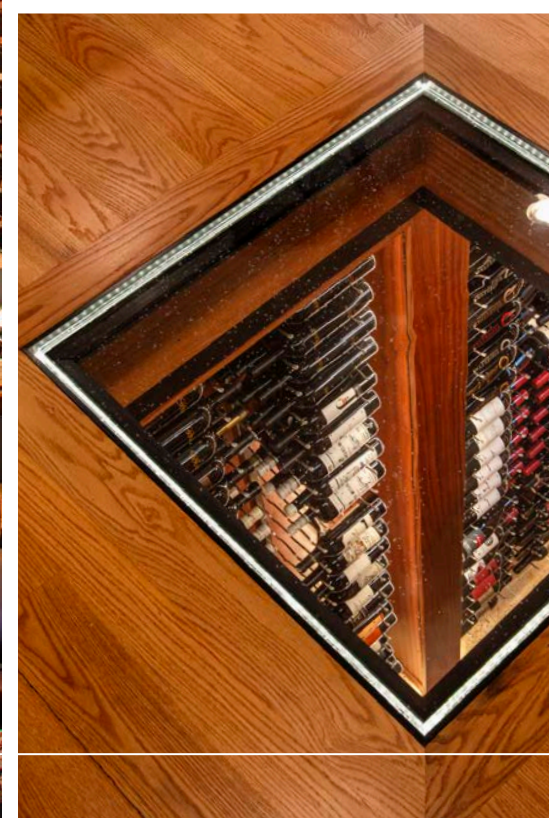


2002 A feature in the Wine Spectator introduces the world to the “vintage view” — or label forward — wine rack. Major wine cellar builders soon become decades-long partners in design.



Ralph C. Fey AIA Architects / Worthington & Shagen Custom Builder Bucks County, Pennsylvania

Photo: Randi Bye



W Series Wine Rack | Triple Bottle Depth

1,008



W Series Wine Rack | Double Bottle Depth

528

Photo: Kirsten Gilliam

[LEFT] Harmonizing timeless charm with contemporary flair, designers begin creatively integrating W Series products as a chic enhancement to wooden cellars. [ABOVE] Embarking on a journey of elevated dining experiences, we begin seeing upscale commercial displays redefining the ambiance of dining spaces, pushing boundaries to new heights.



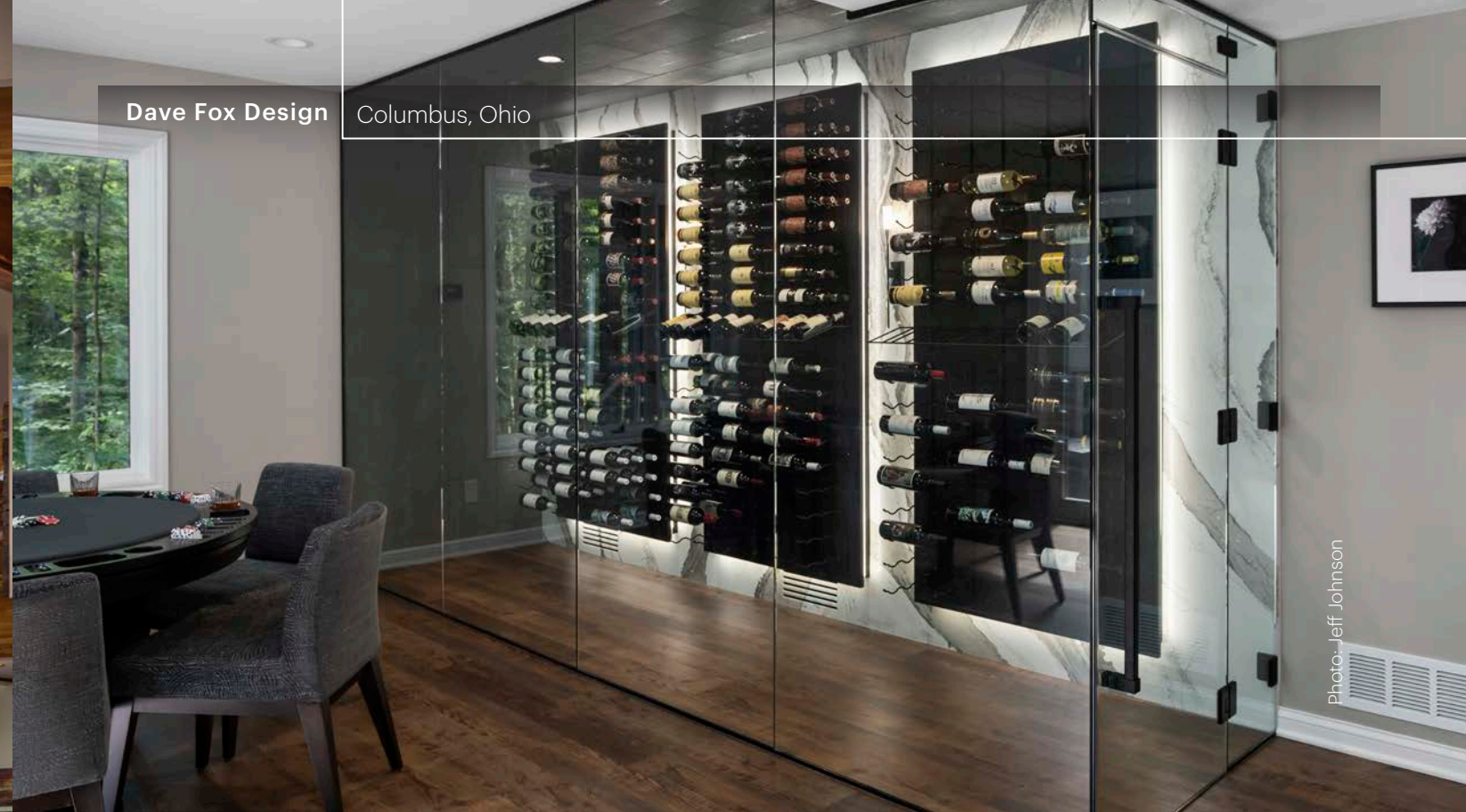
Promontory Club Park City, Utah

Photo: Michael Baxter, Baxter Imaging LLC

W Series Wine Rack Frame System | Double Sided

576

2003 The W Series Wine Rack secures its first patent, establishing our innovative "neck and base" look as the preferred professional design in wine cellaring.



Dave Fox Design Columbus, Ohio

Photo: Jeff Johnson



W Series Wine Rack | Various Bottle Depths

513

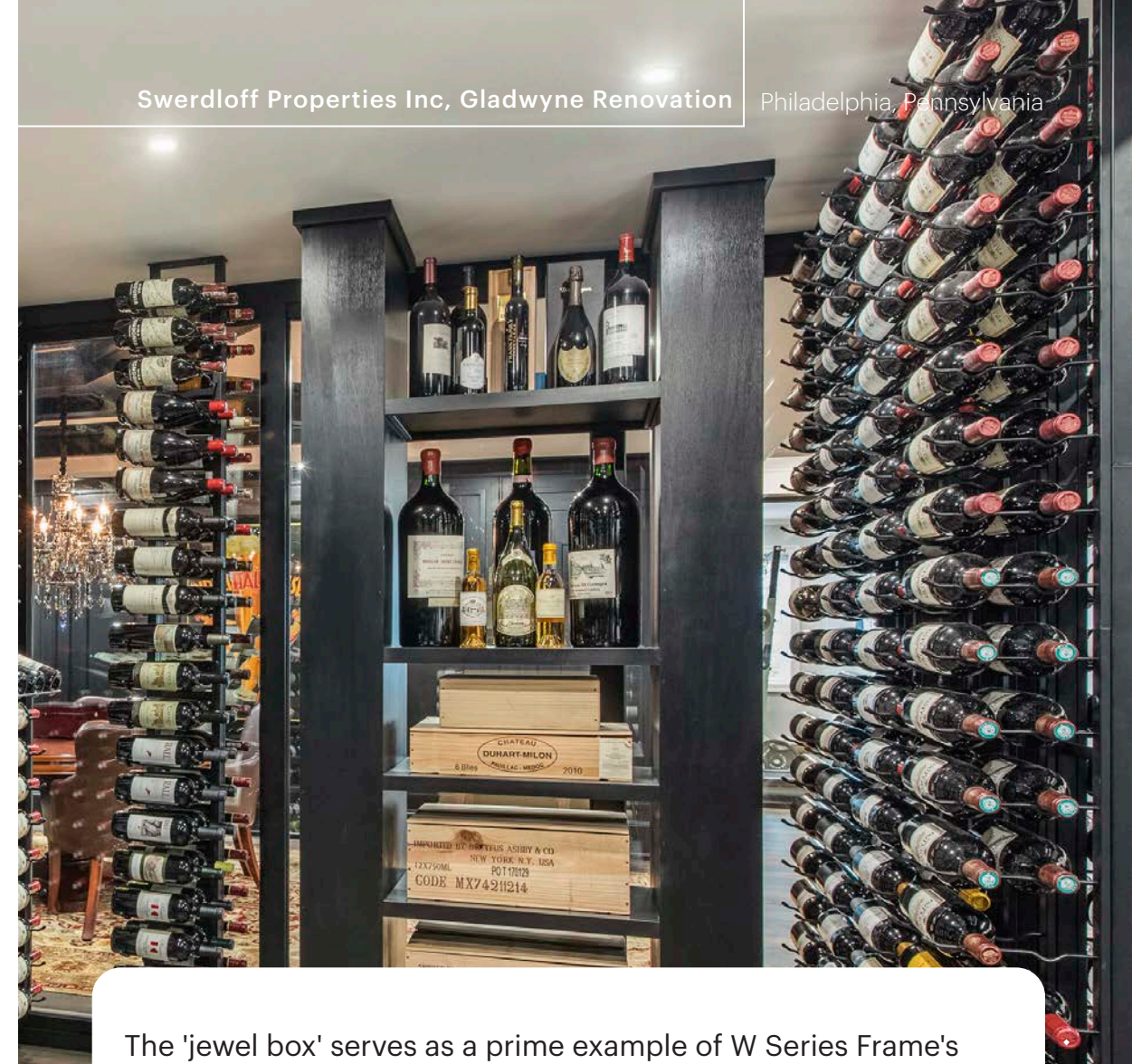


[LEFT] Label-forward racking gains popularity as the preferred choice for visual wine cellars in premier hospitality locations. It enhances any design choice, including this transitional private club, by maximizing capacity without compromise. [ABOVE] The demand for variety leads to innovations like the "Presentation Row" — a distinctive punt-out wine rack.

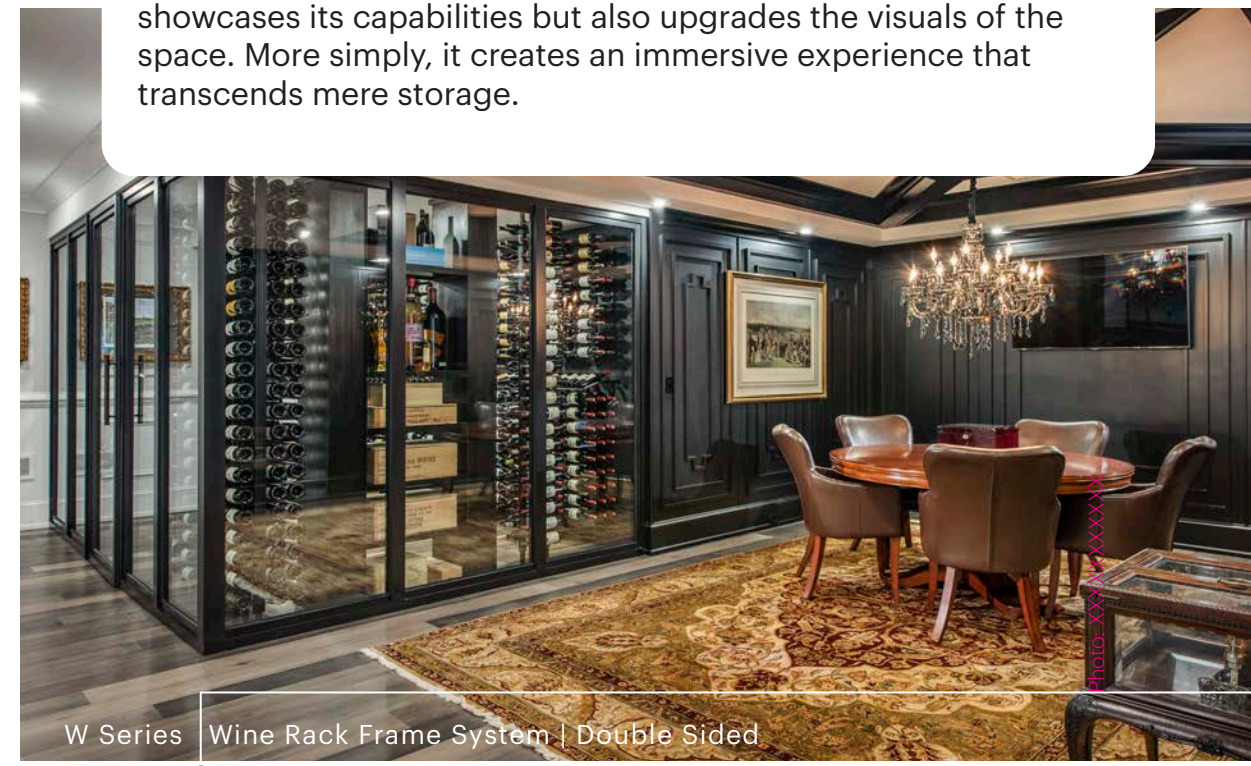


2005

Realizing the demand for floating wine walls, we develop the W Series Frame, moving bottles in front of stone walls, against glass, and into rooms as dividers.



The 'jewel box' serves as a prime example of W Series Frame's design prowess. The integration of glass racking not only showcases its capabilities but also upgrades the visuals of the space. More simply, it creates an immersive experience that transcends mere storage.



W Series Wine Rack Frame System | Double Sided

2009 The original wine bottle green finish is retired, replaced by matte black, the first of five superior finishes to join the collection. Also, the Island Display Rack debuts to fanfare, adding a freestanding option to the lineup.



Mr. Jim Design Webster Groves, Missouri

Set against a stone wall, the W Series Island Display Rack stands as a bold statement in wine presentation. Its sleek and versatile design creates a striking contrast, transforming spaces into an extraordinary showcase of a wine collection's elegance and style.

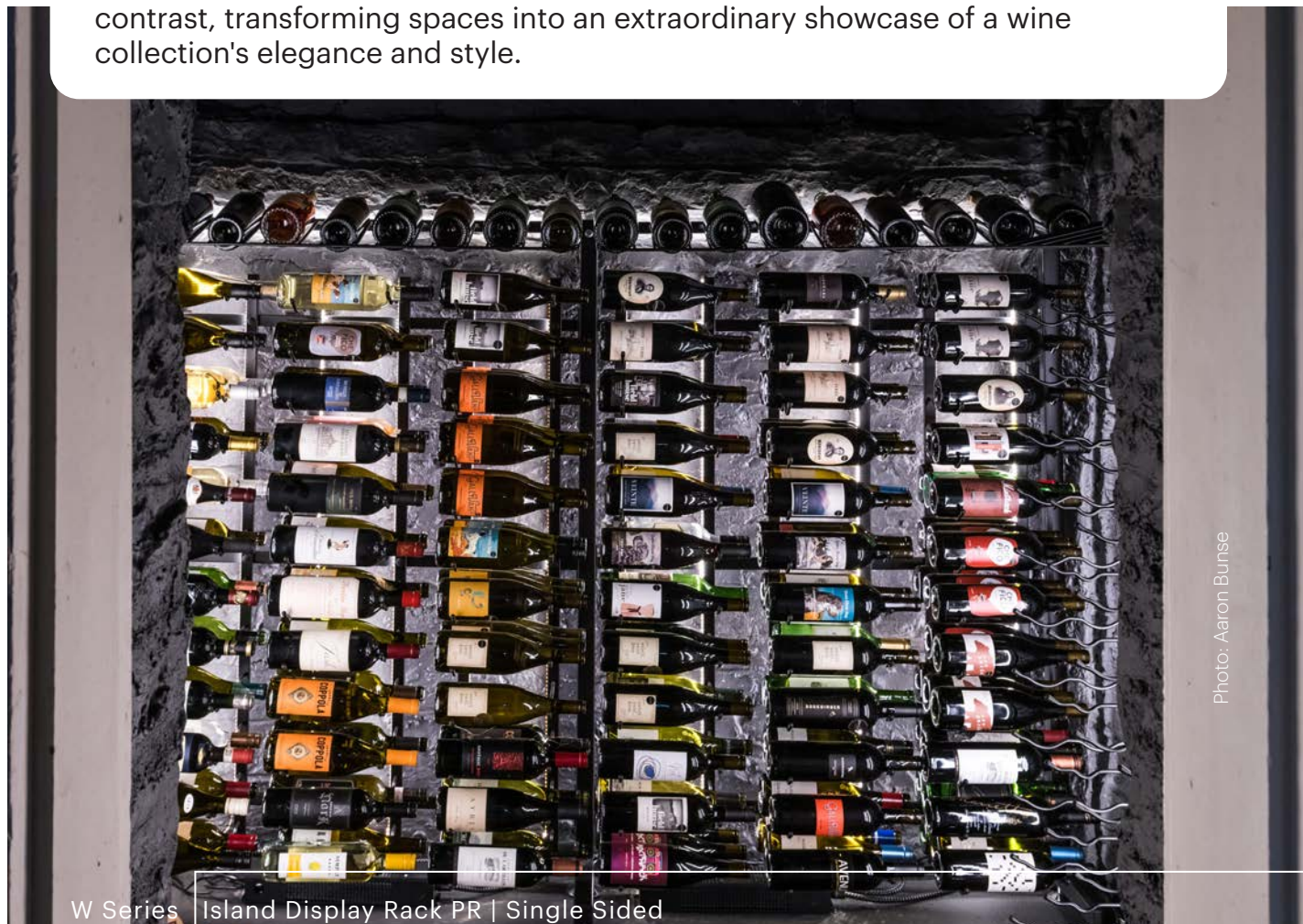


Photo: Aaron Bunse

W Series Island Display Rack PR | Single Sided

162



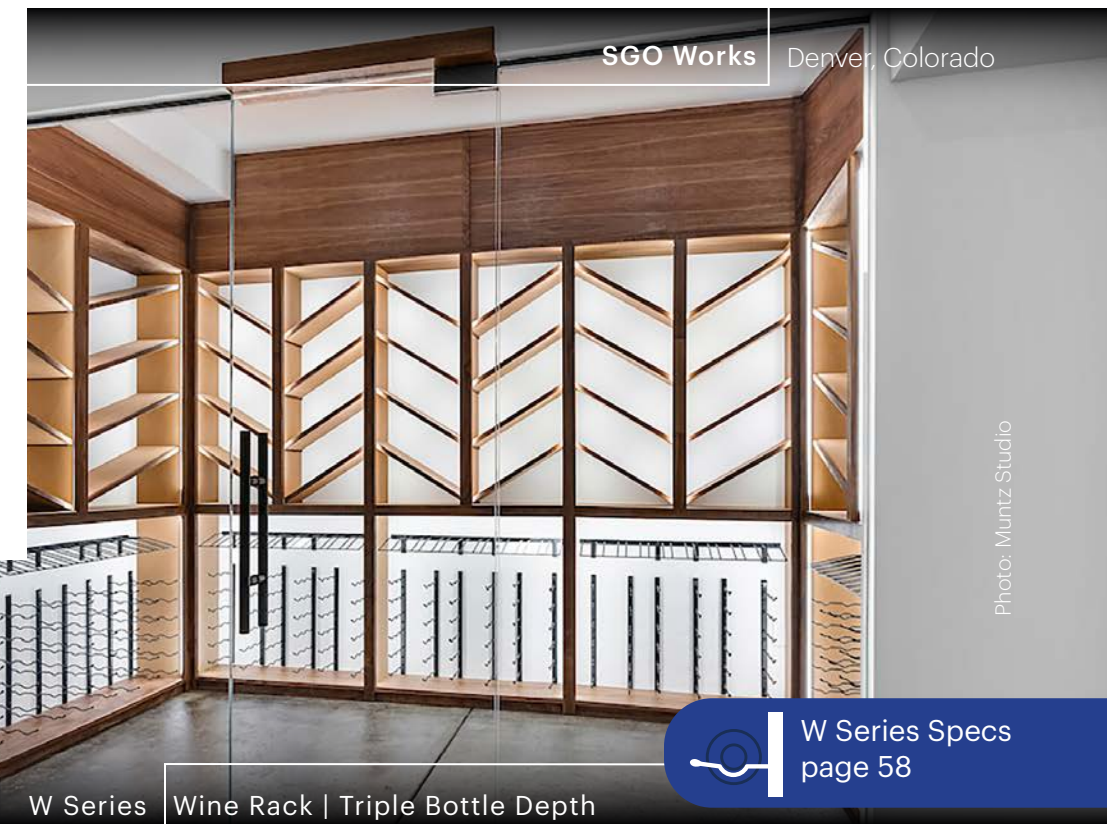
Laurie Griffiths Interior Design Jasper Liquor Lodge / Alberta

Photo: Tracey Jarzmin

W Series Island Display Rack PR | Double Sided

426

[ABOVE] The IDR's seamless functionality enhances diverse retail design aesthetics. [RIGHT] Embrace a wall-mounted interpretation inspired by the bold layout of the Island Display Rack. Featuring W Series Racking alongside the Presentation Row, this distinctive design redefines the cellar with a sleek and versatile aesthetic.



SGO Works Denver, Colorado

Photo: Muntz Studio

W Series Wine Rack | Triple Bottle Depth

412

W Series Specs page 58

[2015]

VINO SERIES

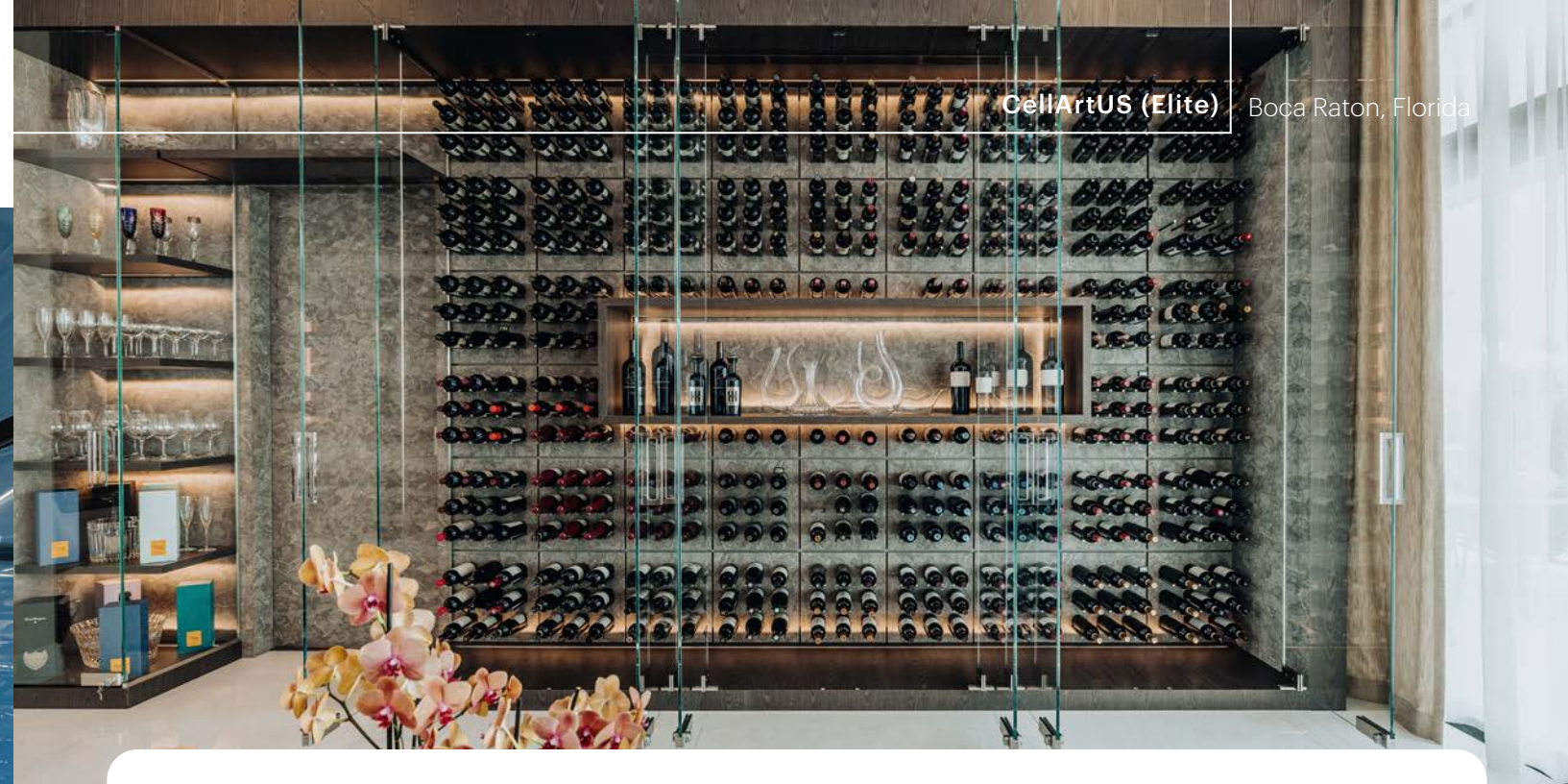
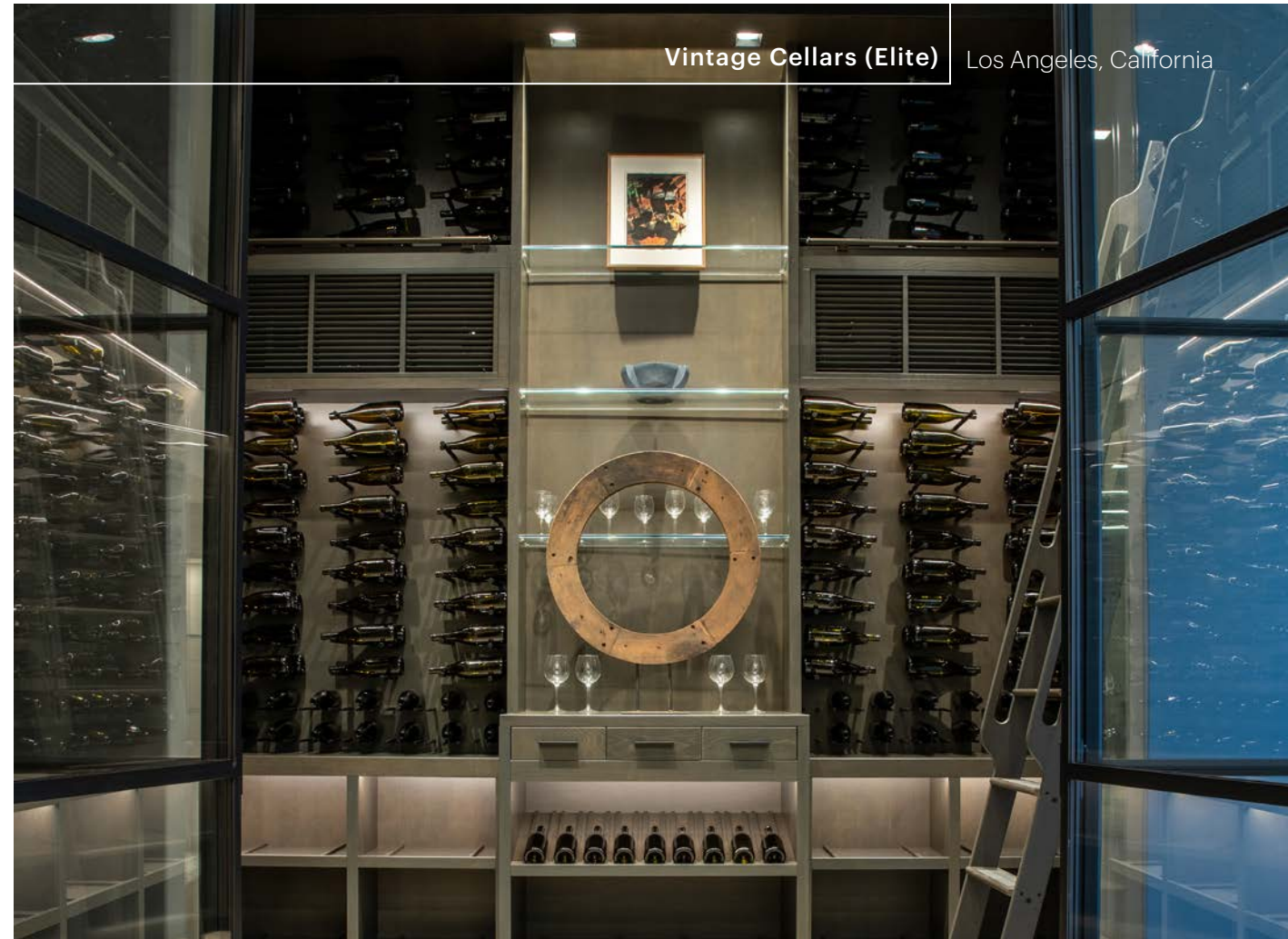
This is where our innovative design meets the distinctiveness of a peg system. Vino Series Pins and Rails add a touch of sophistication to expansive collectors' cellars or stand on their own for unique, minimalist wine features.



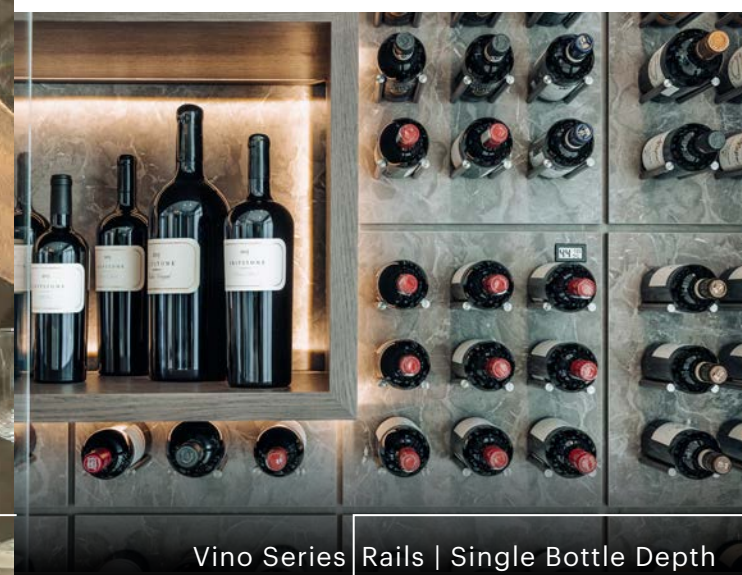
 = finish  = bottle capacity
528

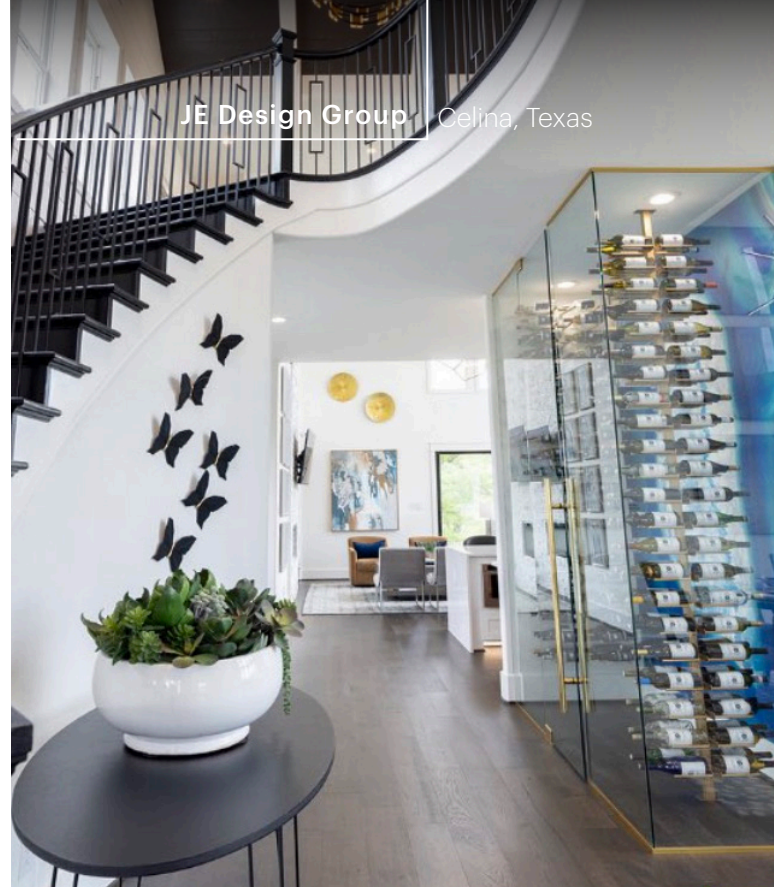


Stepping into an elegant Los Angeles cellar shows off a bespoke, grid aesthetic easily replicated on a variety of installation surfaces be it stone, drywall, or wood.



A true testament to design ingenuity, Vino Rails serve as a dynamic cork-forward pin option, bringing heightened levels of contemporary charm to the cellar.





Vino Rails Post System | Double Sided

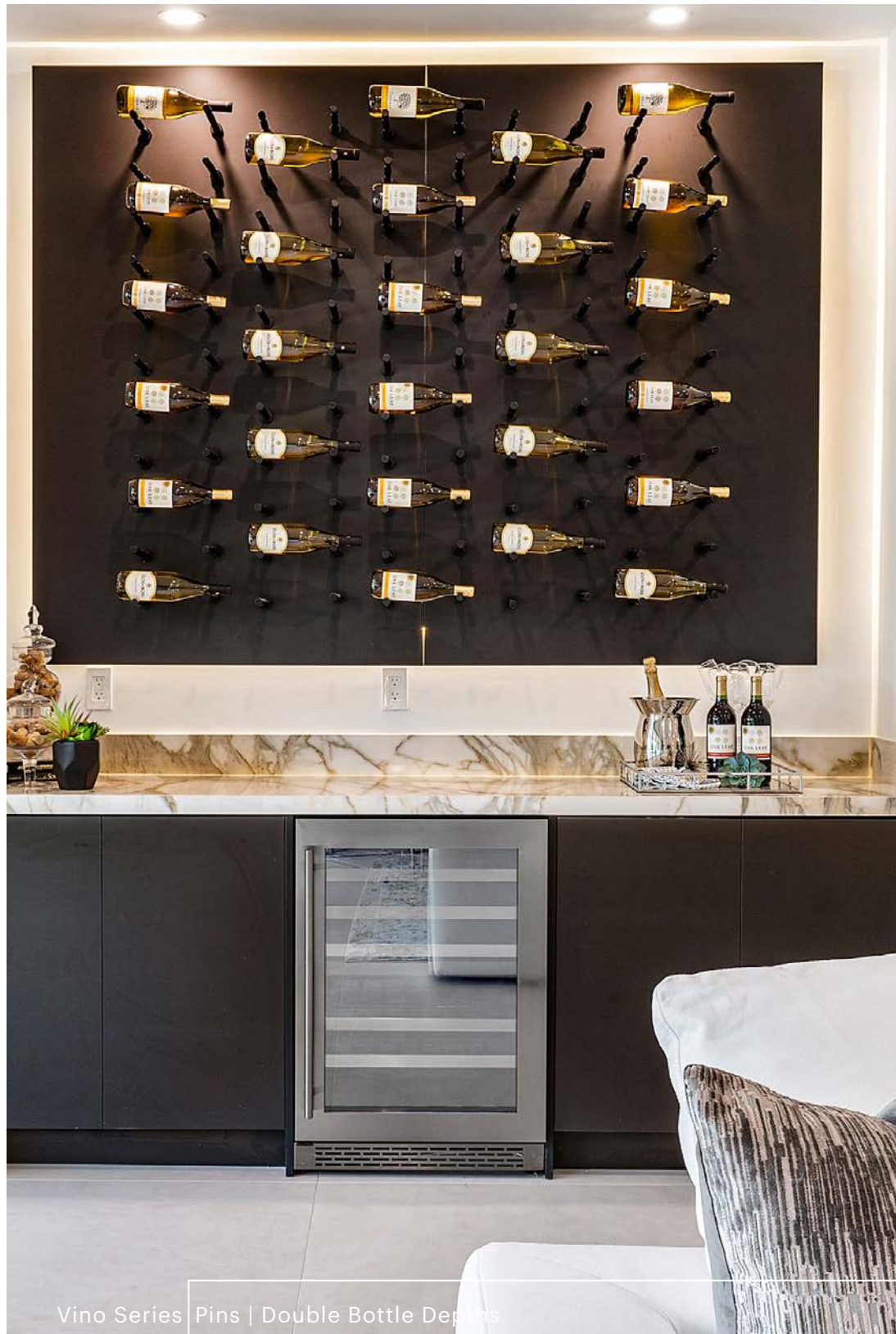
426

Vino Rails Post System | Double Sided

288

2017 We embrace the cork-forward look, adding Rails to the lineup to give a modern twist to the most traditional style of bottle storage.

[LEFT] When paired with VintageView's Post System, our Rails enhance design possibilities, offering an elegant integration for mounting and displaying bottles within glass-enclosed cellars or as room dividers. [ABOVE] A Parade of Homes showcase uses the Rails in a clever orientation to create a defining label-forward display.



Vino Series Pins | Double Bottle Depth

110

2018 As we move our into our new world headquarters, our beloved founder, Doug McCain, officially retires, leaving behind an unmistakable legacy in wine cellar design.

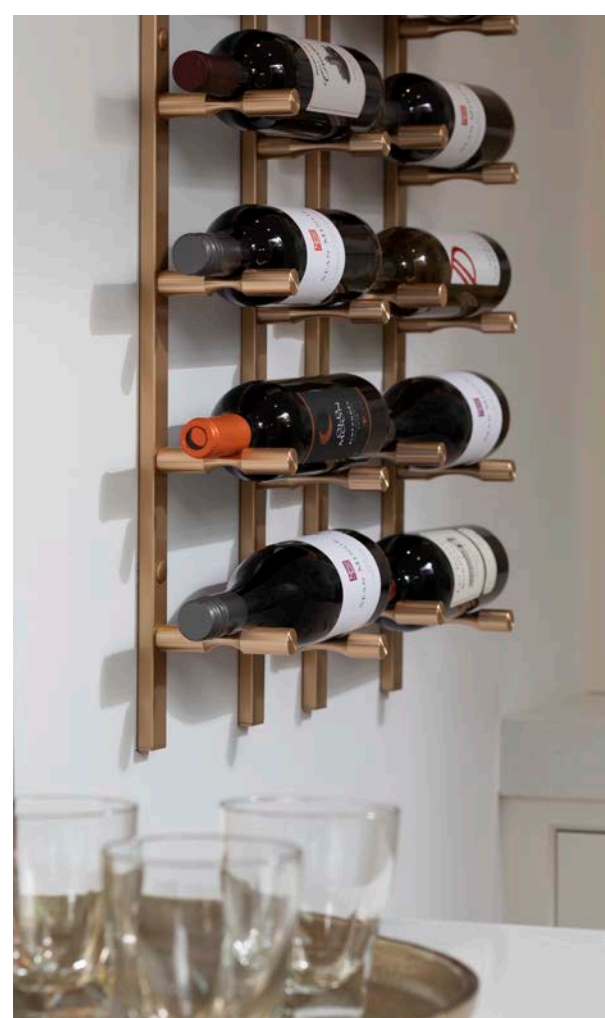


Randy Tanner, Living Proof Photography

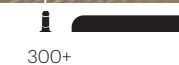
Above a contemporary wet bar, Vino Pins transform drywall into a compelling custom wine feature. The minimalistic design of this collection captivates, creating a sophisticated display for any wine collection.

2019 We elevate the series with two new bold, upscale finishes: Golden Bronze and Gunmetal.

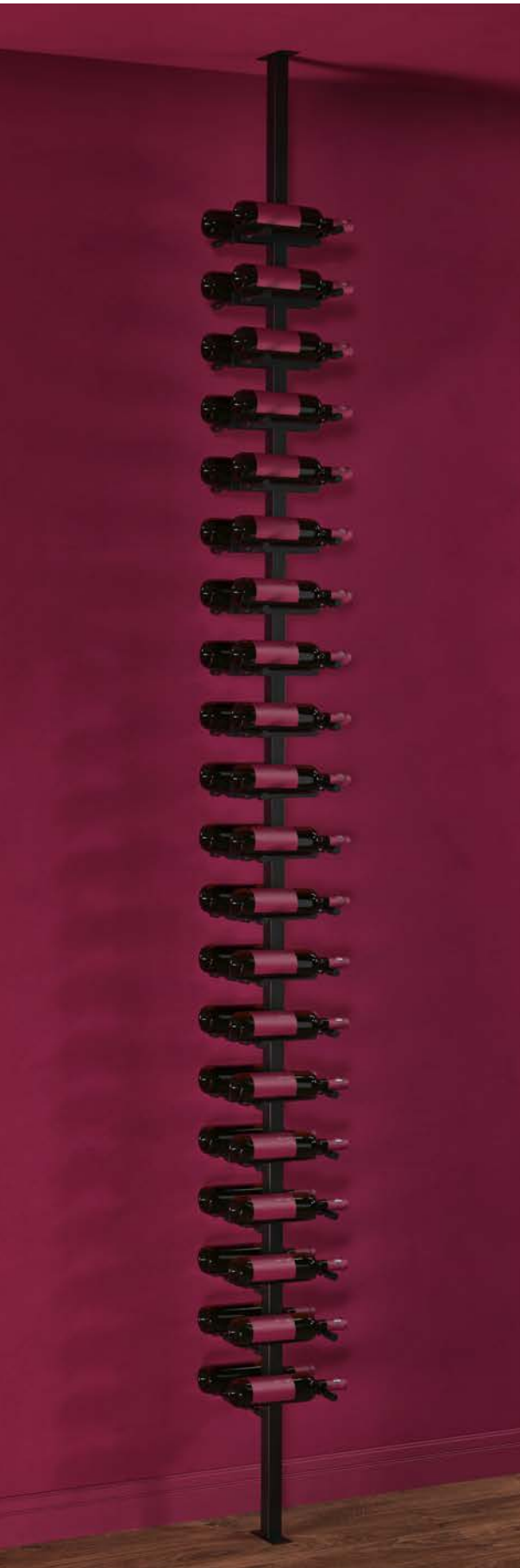
Vintage Cellars (Elite) Los Angeles, California



[LEFT] The New American Home is the apex of design innovation, and in 2021 the Vino Pins Flex adorned the walls of the home's contemporary wet bar. [ABOVE & COVER] A tasteful lighting plan boasts the impact of a transitional California cellar.



The Vino Series Post System debuts at The New American Home, elevating our Pins and Rails into elegant floor-to-ceiling displays.



CellArtUS (Elite) Key Biscayne, Florida

Vino Series Post System | Double Sided

80



Builders Glass Of Bonita (Elite) Naples, Florida

Vino Series Post System | Double Sided

110

Vino Specs page 60

[TOP] A swank wine room showcases the Post System against glass. [BOTTOM] The floating wine storage divides a piano lounge from the kitchen.

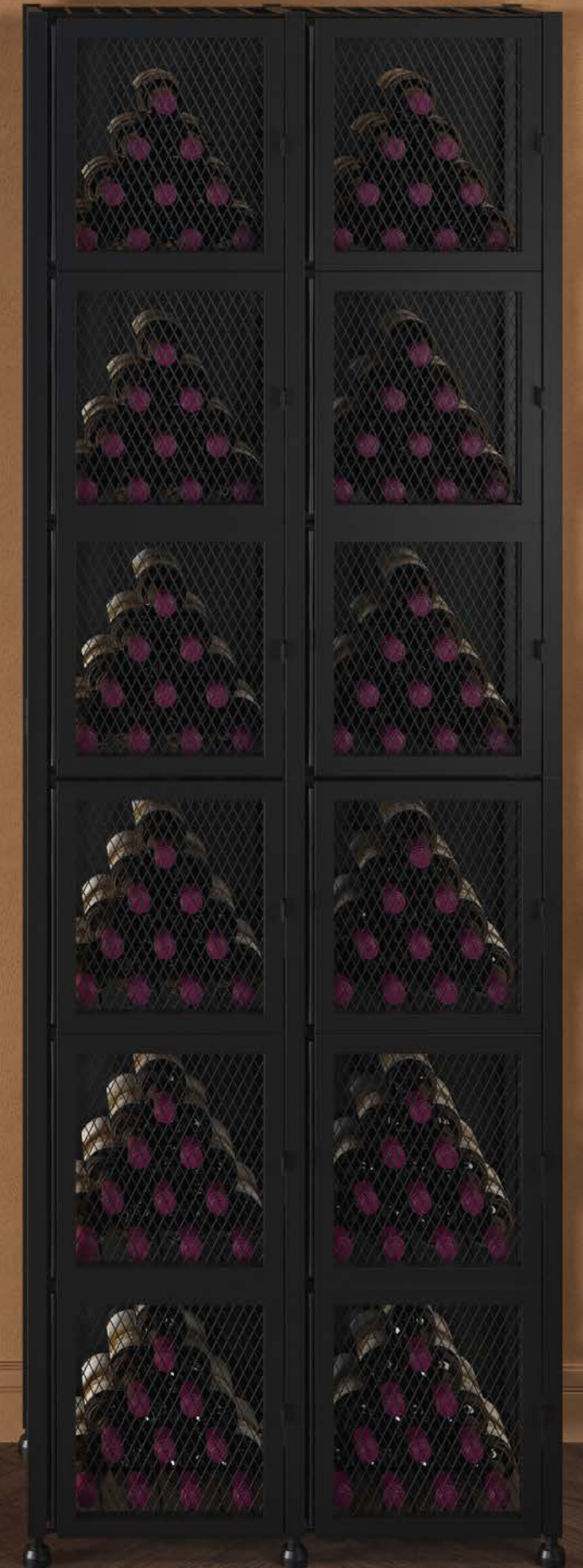
[2017]

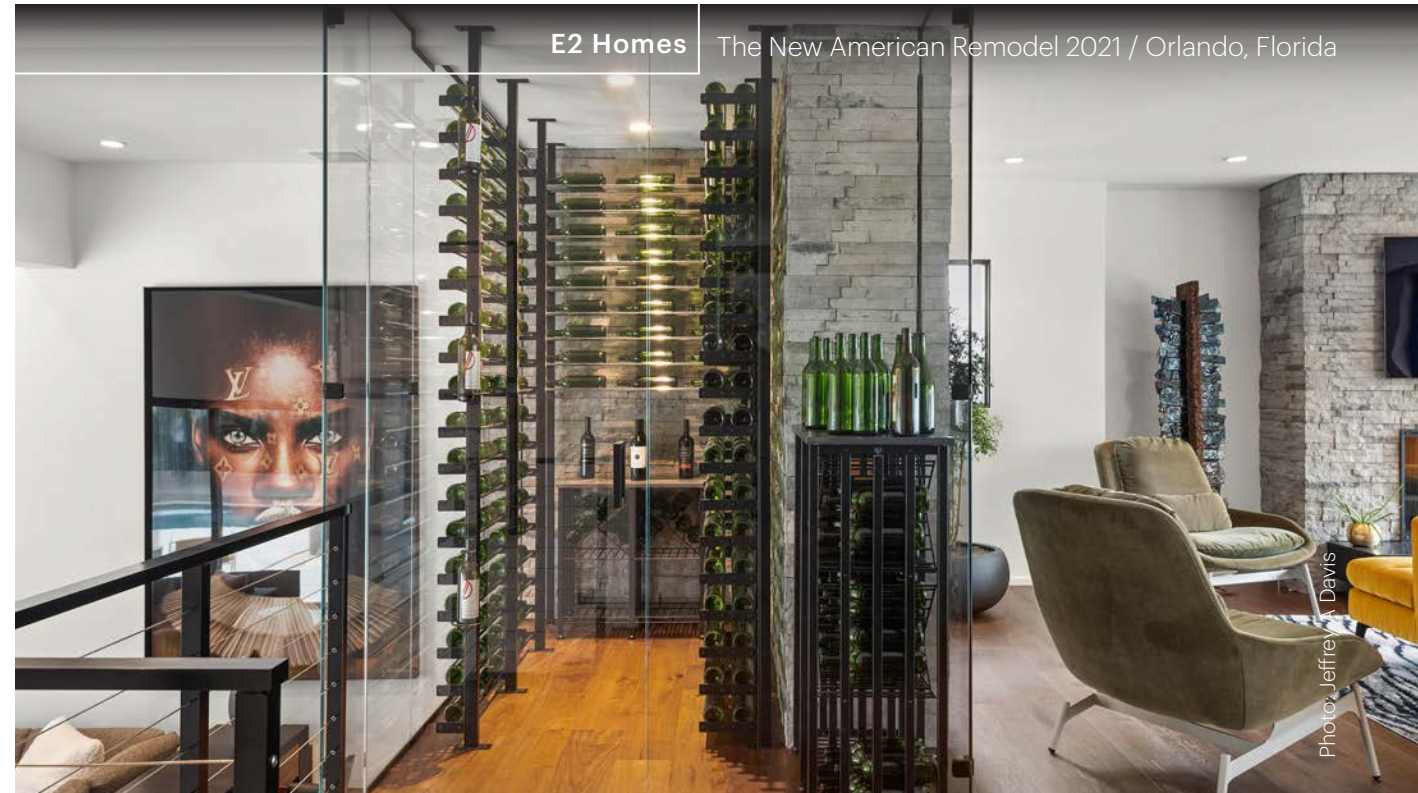
CASE & CRATE

It was only a matter of time before we elevate high-capacity storage, launching a chic line of Lockers and Bins to meet any custom requirement.



 = finish  = bottle capacity 528





E2 Homes The New American Remodel 2021 / Orlando, Florida

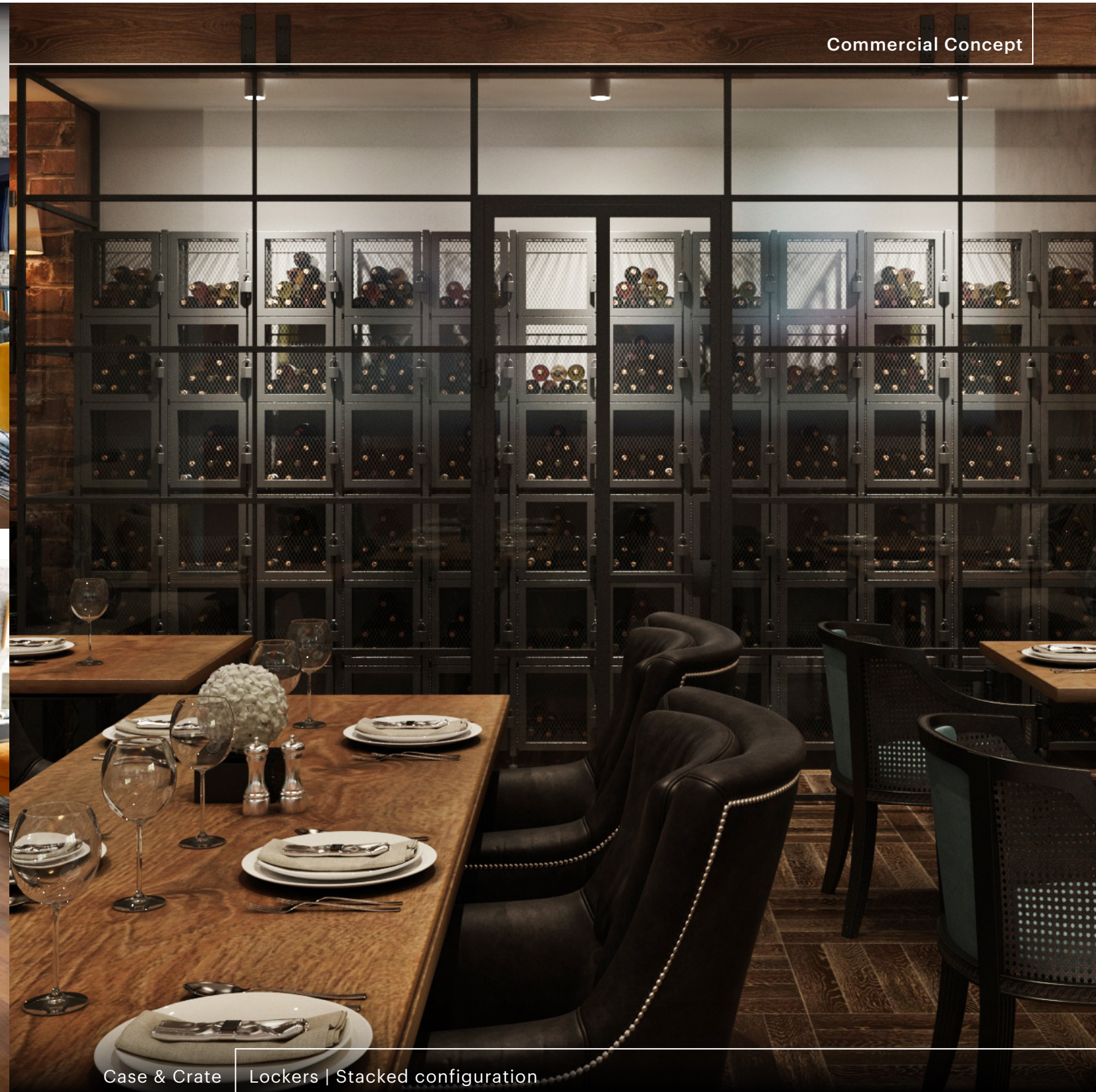
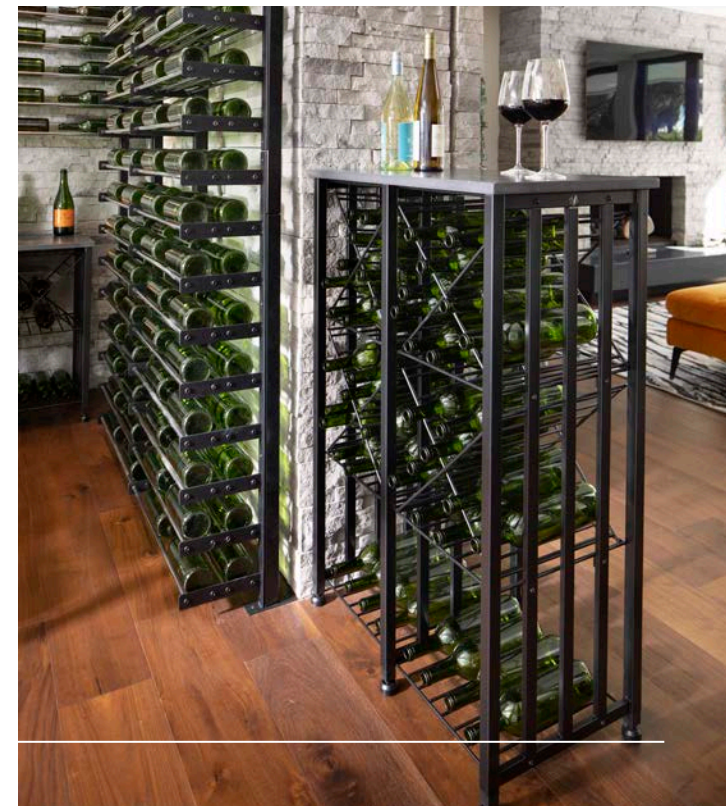
Photo: Jeffrey A. Davis



Mixed Evolution Wine Wall, Case & Crate Bins



584



Commercial Concept

Case & Crate Lockers | Stacked configuration



1,152

2019 Who says legacy companies can't keep pace with start ups? At 18 years young, VintageView makes the INC 5000 list as one of the country's fastest growing companies.

[LEFT] Our expansive racking collections offer style options, allowing tastemakers to expertly mix and match. Case & Crate joins Evolution Wine Wall in The New American Remodel 2021's remarkable cellar. [ABOVE] Restaurants drive engagement — and visuals — through Locker programs.

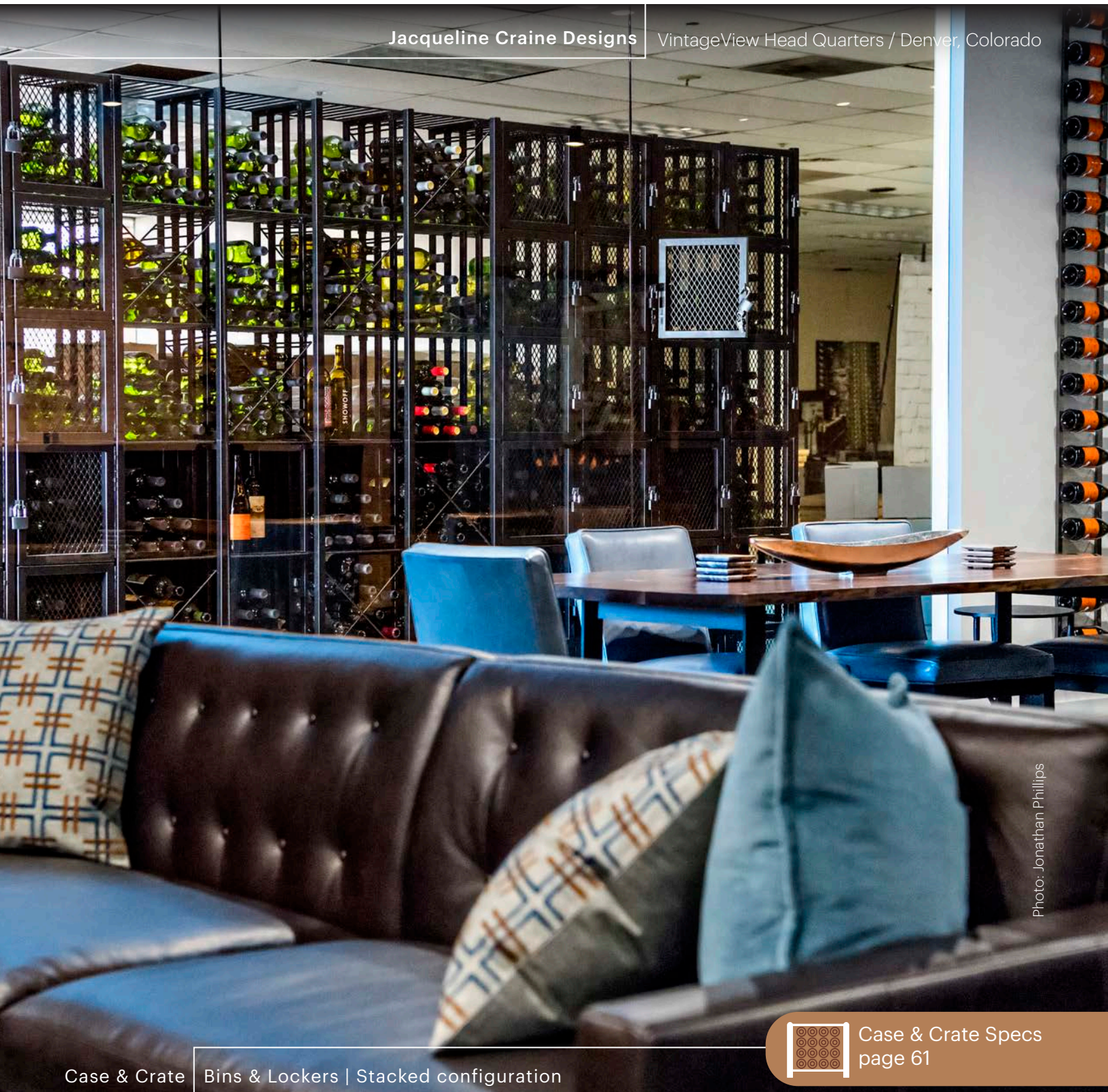


Photo: Jonathan Phillips

Case & Crate | Bins & Lockers | Stacked configuration

1000+



Case & Crate Specs
page 61

[2013] EVOLUTION WINE TOWER

Blending acrylic and steel in the most minimalist fashion, the "Evolution" wine rack debuts, laying the foundation for an all new collection of innovative, label forward storage.



 = finish  = bottle capacity
528



Explore our cutting-edge design facility at VintageView Headquarters, where we invite the public to immerse themselves in the world of our wine racks. Whether you're on a tour, attending a meeting, or joining an event, we welcome you to make an appointment and experience it for yourself when you're in the Mile High City.

Innovative Wine Cellar Designs (Elite) Scottsdale, Arizona



Evolution Wine Tower | Triple Bottle Depth / Custom Width



332

Commercial Concept



Evolution Wine Tower | Triple Bottle Width



162

Evolution Specs
page 62

The allure of a traditional collectors' cellars with a modern twist gains traction. Here, we harmonize earthen features with sleek chrome finishes, creating a timeless combination that blends a rustic charm with contemporary elegance.



The Wine Tower effortlessly integrates into various design aesthetics with its adaptable acrylic panels. Watch as it becomes an integral part of an organic, trend-setting restaurant, showcasing its versatile and stylish presence.

[2018]

EVOLUTION WINE WALL

Creating an industrial chic style, the Wine Wall advances Evolution into an insanely flexible wall-mounted bottle rack with unique depth, height, and width options available.



 = finish  = bottle capacity
528





Brian Finkel Pop Alleigh / Atlanta, Georgia

[LEFT] Paired with stunning backlit LEDs, the Wine Wall's modularity is the ideal choice for this Atlanta Champagne Bar. [BELOW] Embracing this highly adaptable system to match preferences, offers limitless configurations. This can include using Shelves and Presentations Rows to highlight special bottles, as demonstrated in this Texas home.

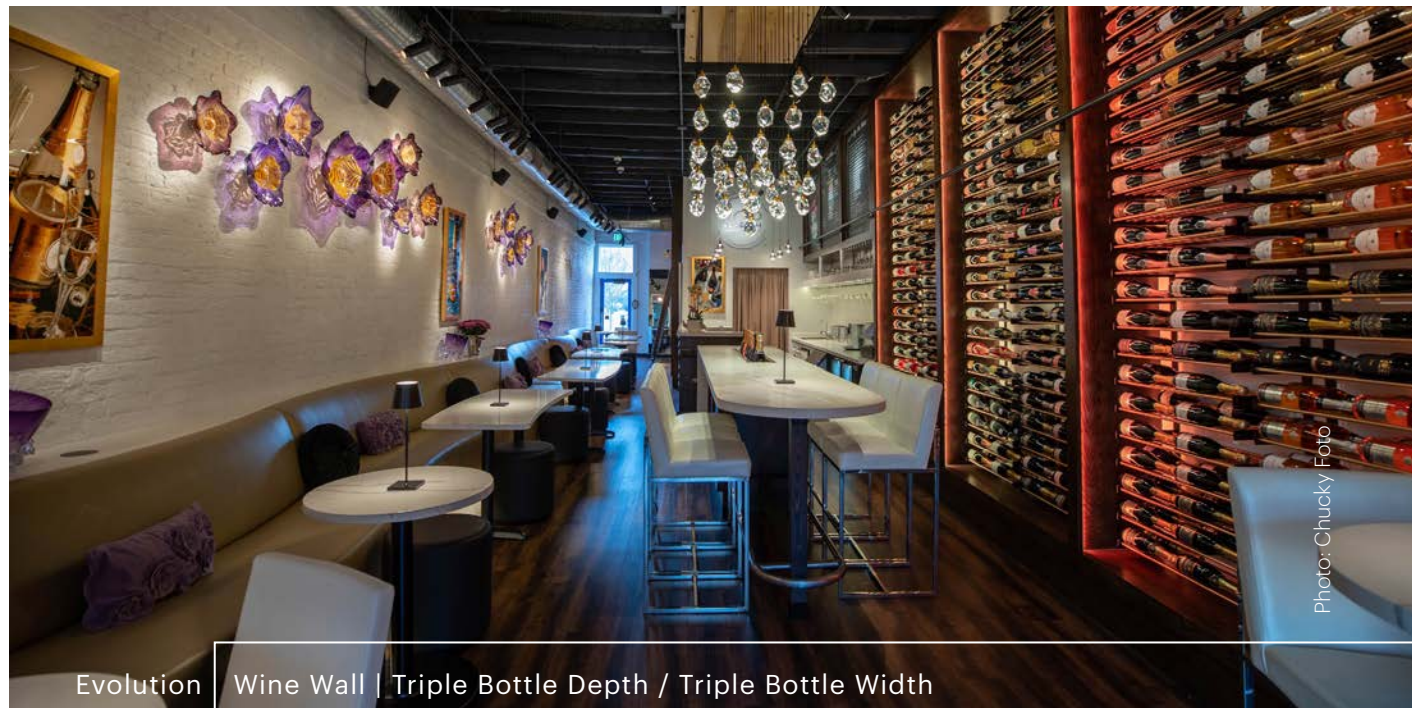


Photo: Chucky Foto

Evolution Wine Wall | Triple Bottle Depth / Triple Bottle Width



2016



Evolution Wine Wall | Triple Bottle Depth / Double Bottle Width

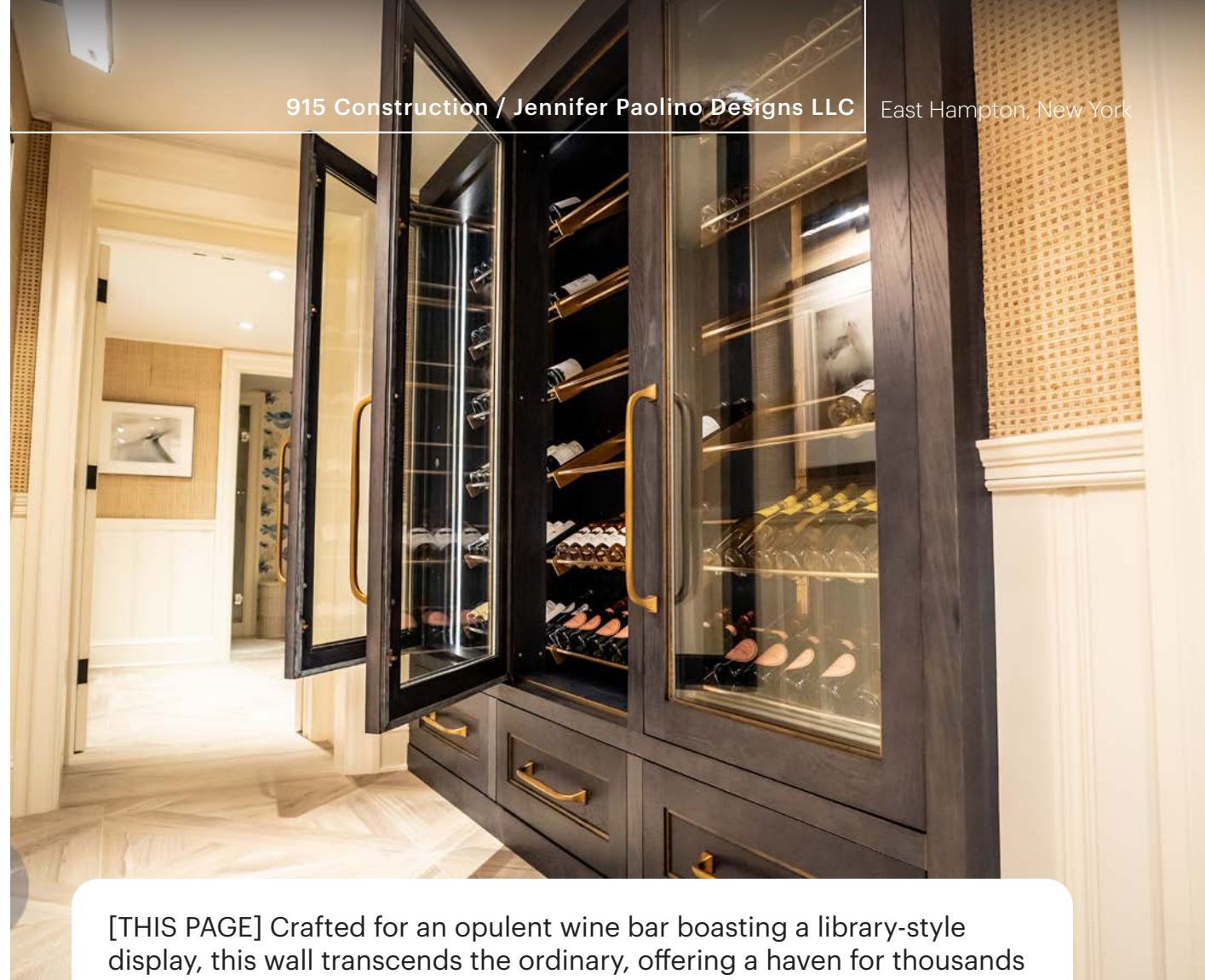


278

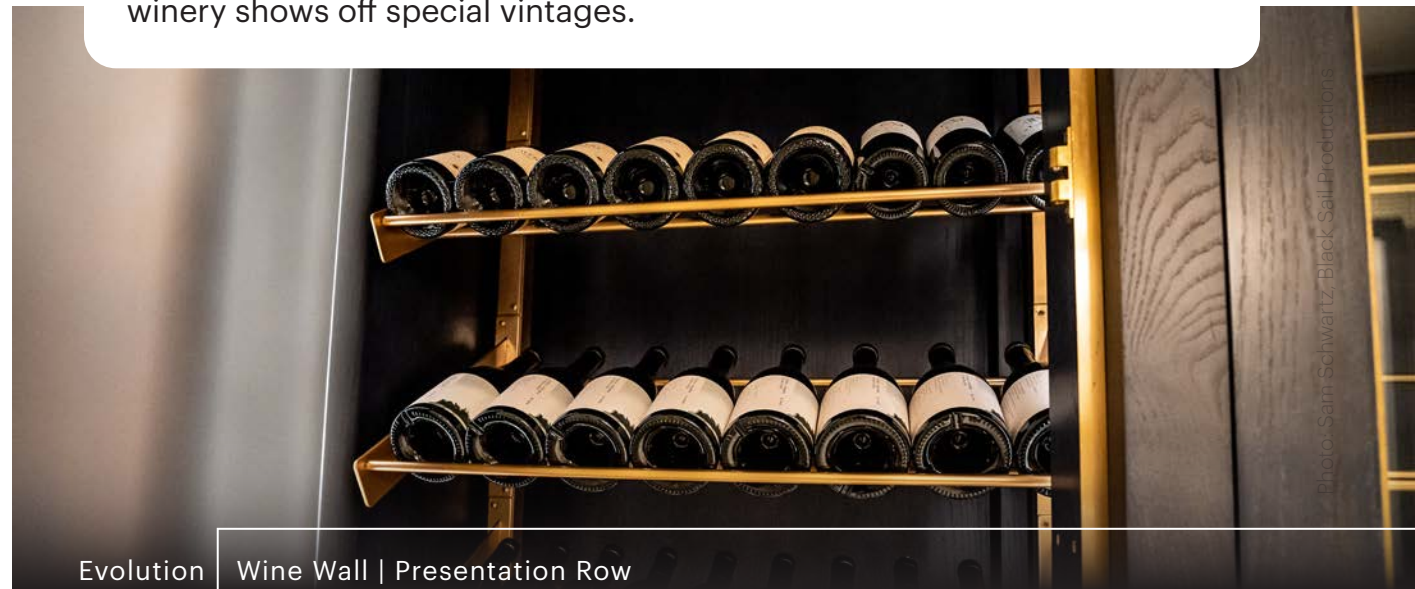


Classic Wine Cellars (Elite) Southlake, Texas

2019 The Universal Post comes to market, allowing a floor-to-ceiling mounting option up to 17' for all VintageView wine racks.



[THIS PAGE] Crafted for an opulent wine bar boasting a library-style display, this wall transcends the ordinary, offering a haven for thousands of bottles. [RIGHT] The member's only cellar at a high-end Washington winery shows off special vintages.



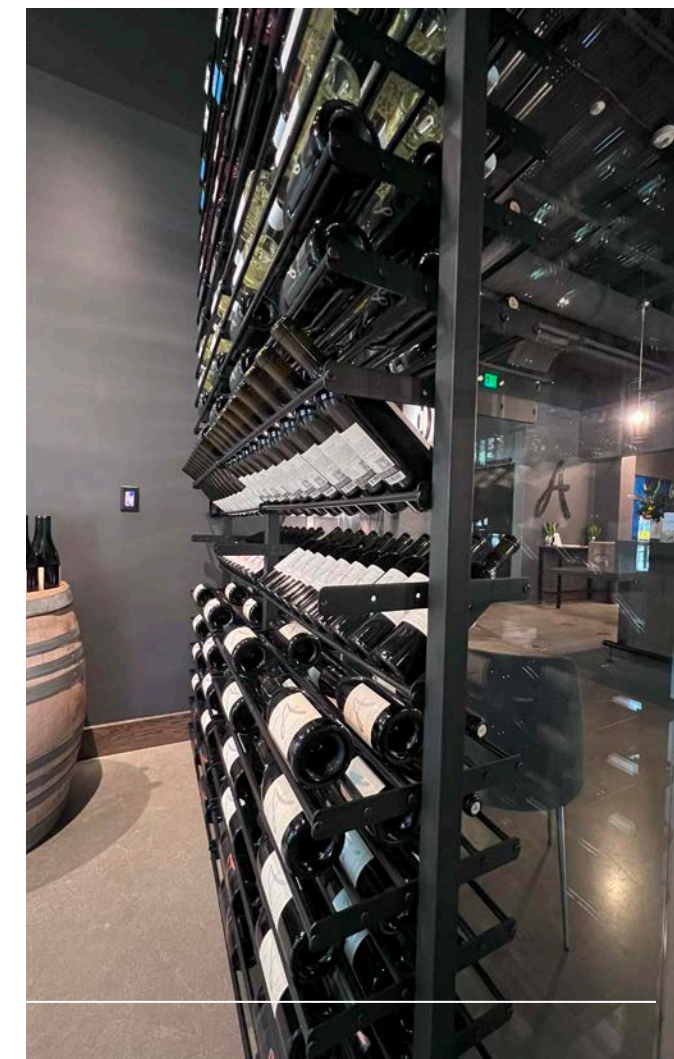
Evolution Wine Wall | Presentation Row

162



Evolution Wine Wall & Low Profile | Various Depths & Widths

1,467



2020 Remember that first acrylic rack in the Evolution collection? We improve the original design to match the contemporary needs of the design community, squaring off the corners for a compelling look.



[BELOW] A wine cellar builder opts for an integrated aesthetic by installing Wine Rods into pocket holes to create a built-in appearance. [RIGHT] Alternatively, for a dash of flair, an elite builder explores a two-tone look — playing with unique finishes on the Brackets and Rods to add a touch of contrast.



Vintage Cellars (Elite) Los Angeles, California

Evolution Wine Rods | Single Bottle Depth / Double Bottle Width

140



Fainting Goat Cellars (Elite) Colleyville, Texas

Evolution Wine Wall | Triple Bottle Depth / Triple Bottle Width

594



Industrial Loft

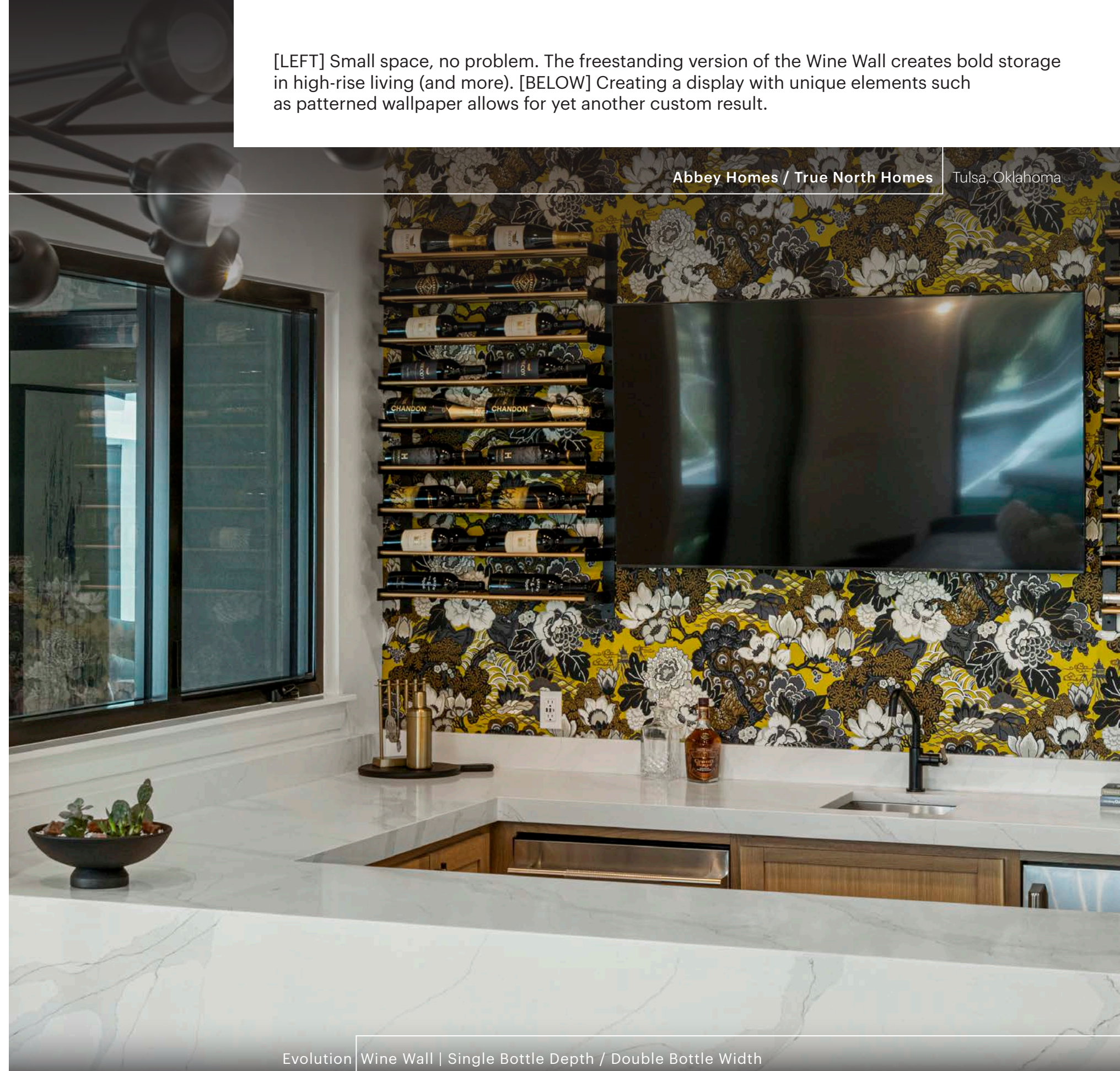
Evolution Island Display Rack XL | Single Sided



72

2021

Leaning on the freestanding infrastructure in our W Series, Evolution launches an Island Display Rack, an elevated offering to serve as centerpieces in massive collector's cellars or for smaller bar style displays in elegant high-rise living.



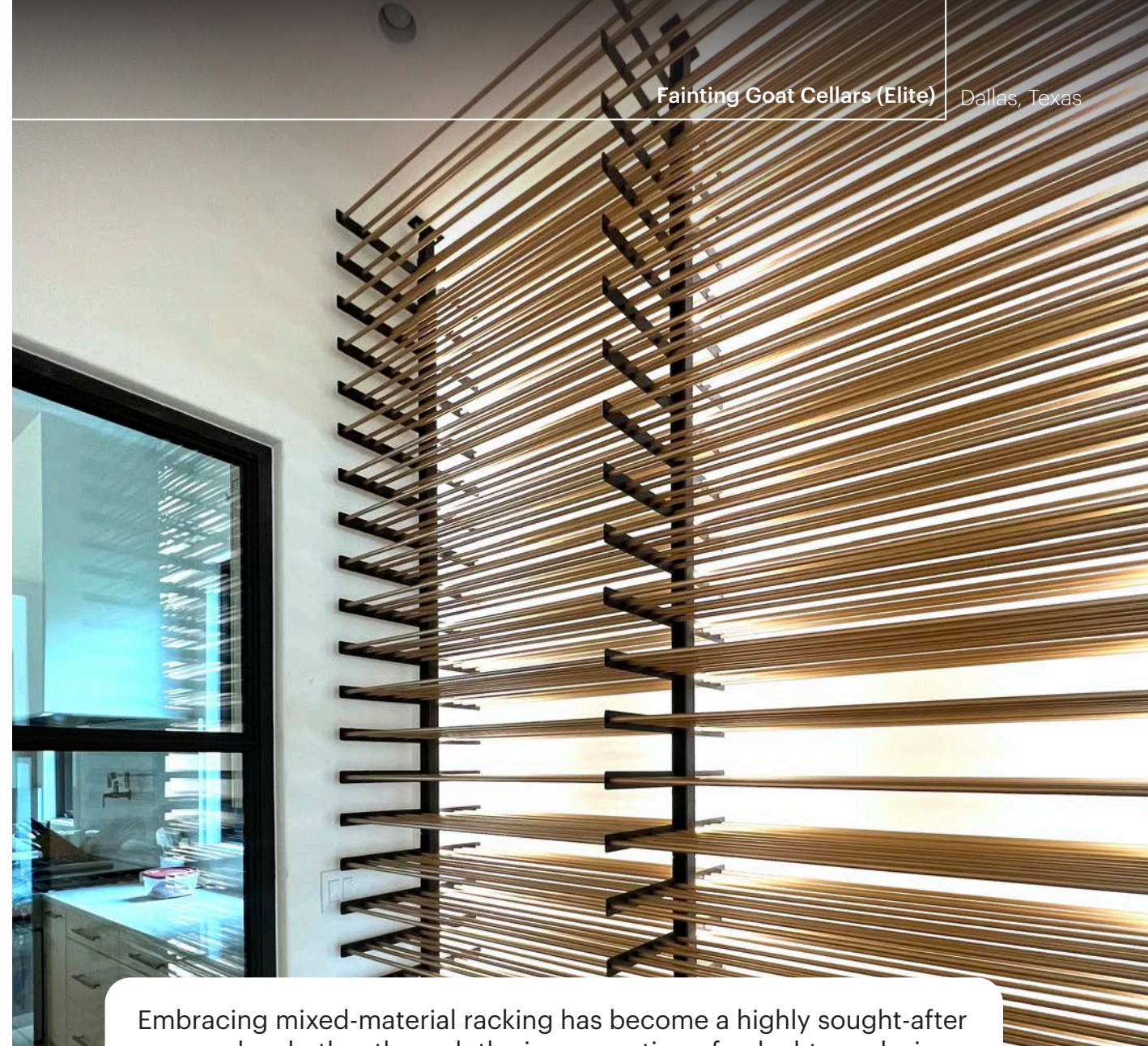
[LEFT] Small space, no problem. The freestanding version of the Wine Wall creates bold storage in high-rise living (and more). [BELOW] Creating a display with unique elements such as patterned wallpaper allows for yet another custom result.

Abbey Homes / True North Homes Tulsa, Oklahoma

Evolution Wine Wall | Single Bottle Depth / Double Bottle Width



72



Fainting Goat Cellars (Elite) Dallas, Texas

[BELOW] Tasting tables inside cellars are on trend, but it's always more comfortable to enjoy the wine outside the room. [BOTTOM] The popularity of luxurious sitting/wine room is shown in traditional elegance in this Texas home.



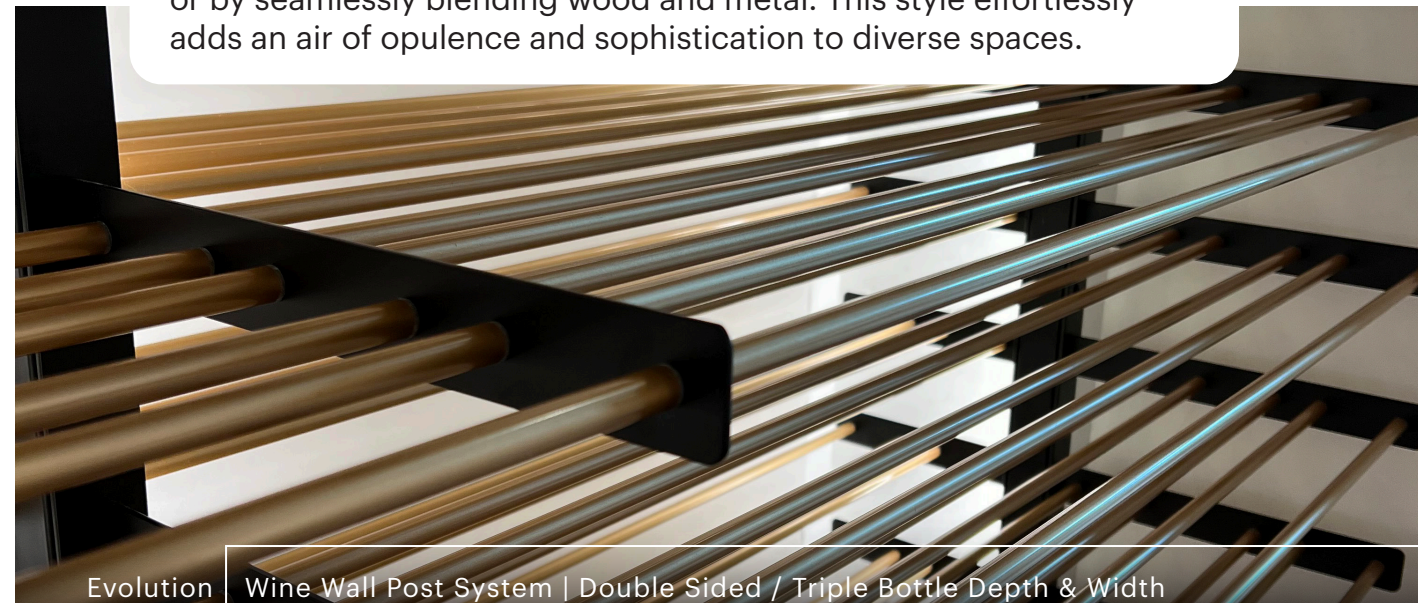
Interior Design: Kelly Johnson / GC: Sitelines Inc. / Wine Cellar: Lamp Wine Cellars Ladue, Missouri

Alyse O'Brien Photography

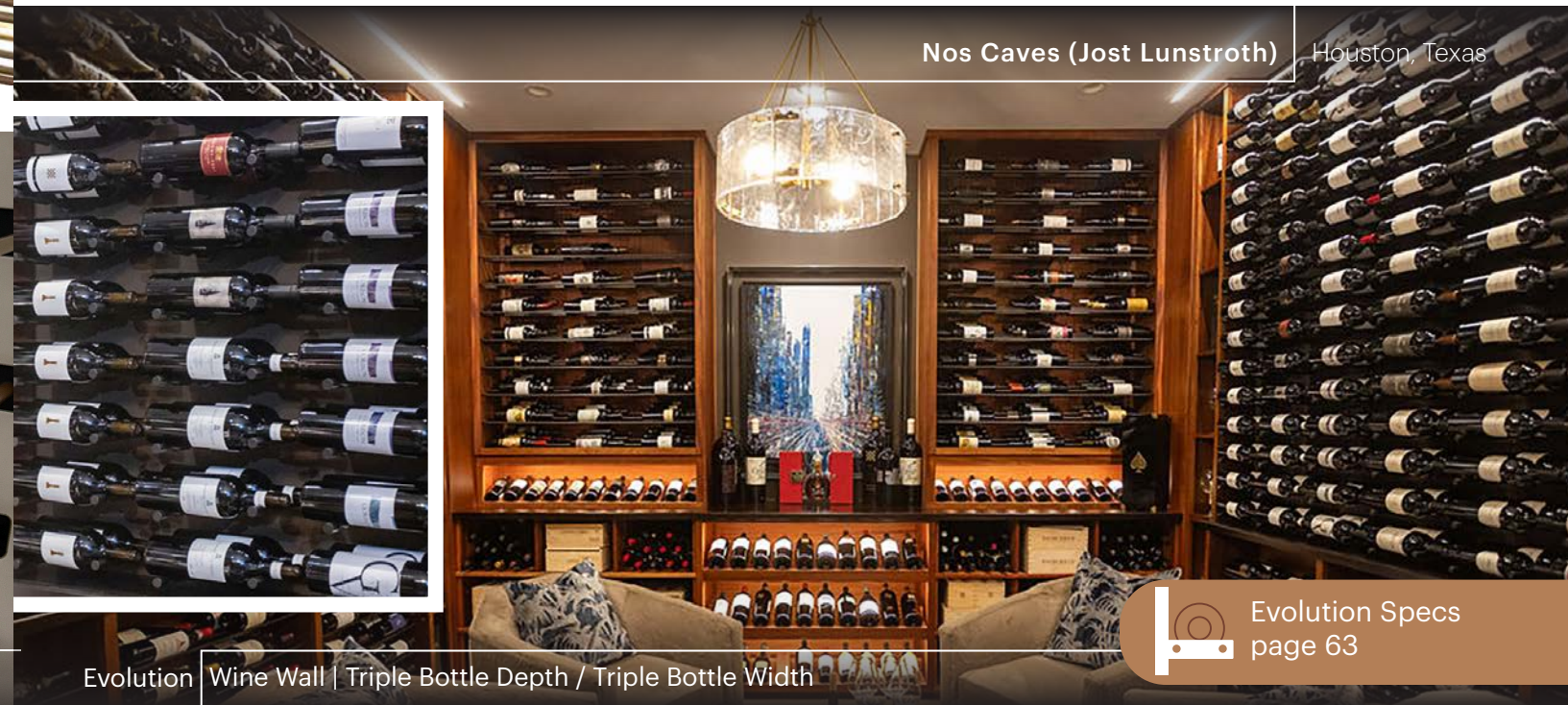
Evolution Wine Wall | Various Bottle Depth & Widths



Embracing mixed-material racking has become a highly sought-after approach, whether through the incorporation of a dual-tone design or by seamlessly blending wood and metal. This style effortlessly adds an air of opulence and sophistication to diverse spaces.



Evolution Wine Wall Post System | Double Sided / Triple Bottle Depth & Width



Nos Caves (Jost Lunstroth) Houston, Texas

Evolution Wine Wall | Triple Bottle Depth / Triple Bottle Width



Evolution Specs page 63



[2020]

EVOLUTION

LOW PROFILE

Aiming to evolve the Wine Wall style into the slimmest footprint, Low Profile debuts with options starting as skinny as 3" in depth. This system balances rigid construction with optimal design flexibility to become the superior floor-to-ceiling system in this style category.



 = finish  = bottle capacity
528



Au Troisieme, a distinguished French restaurant in Dallas, epitomizes class and elegance in every detail. Its private dining room is adorned with a curated collection designed to impress and entice customers, creating a refined culinary experience.



Evolution Low Profile | Triple Bottle Depth / Triple Bottle Width

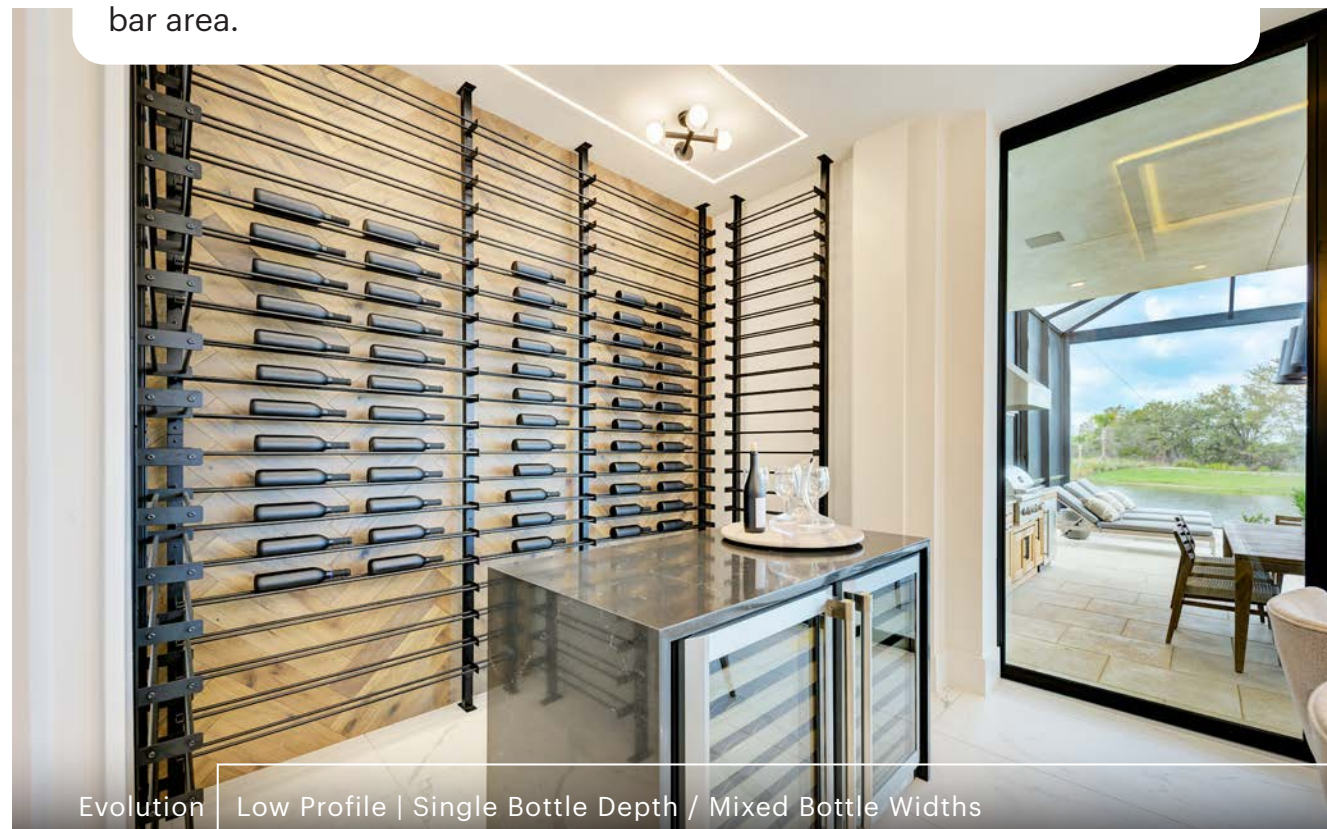
795

2021 The W Series Wine Rack evolves, adding a new Luxe edition finish that features elevated rounded rod tips and other high-end hardware.





The Low Profile System takes center stage behind a captivating wet bar. The use of the thin wine display adds a confident air of refinement to the bar area.



Evolution Low Profile | Single Bottle Depth / Mixed Bottle Widths



147

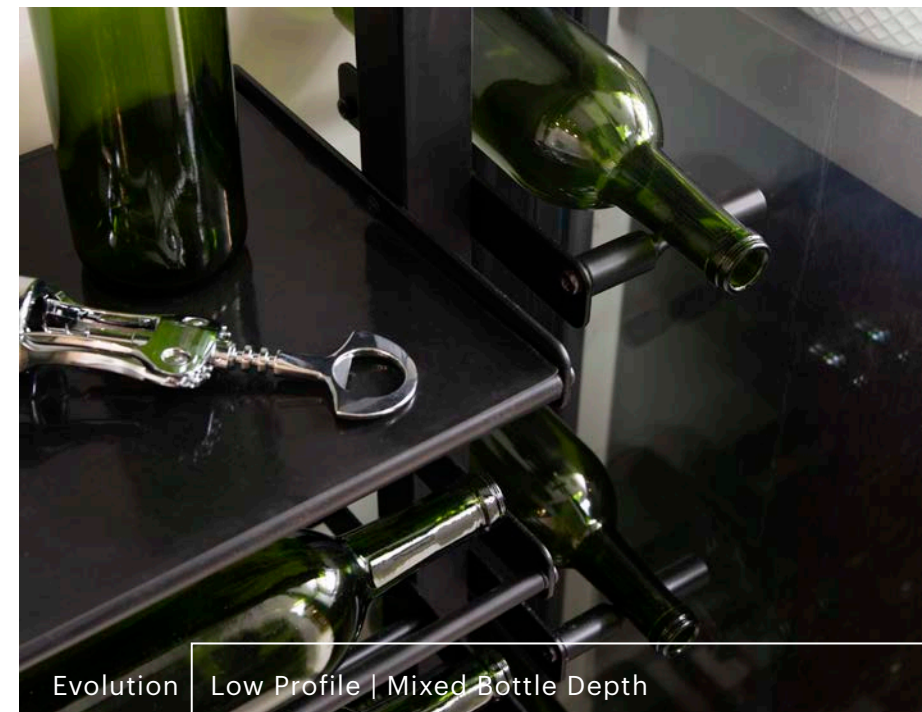
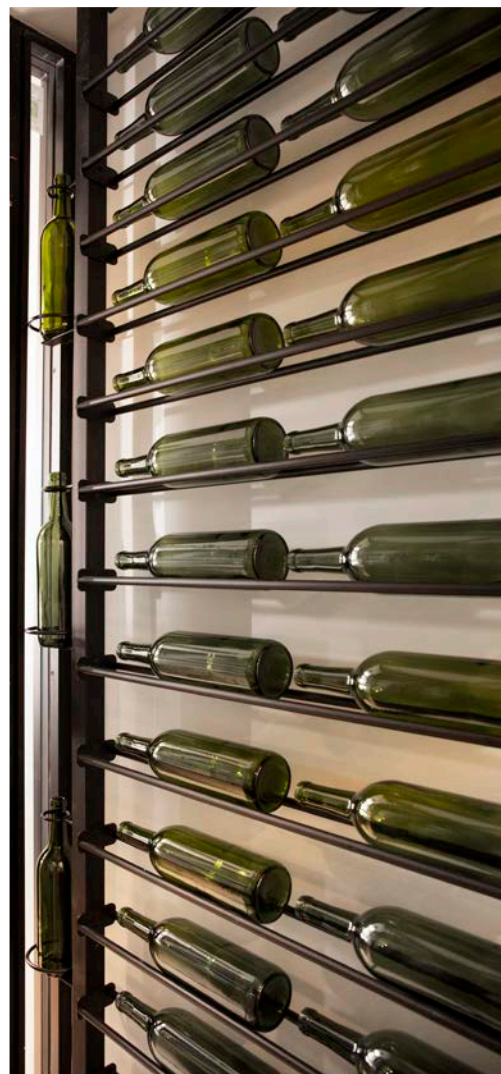
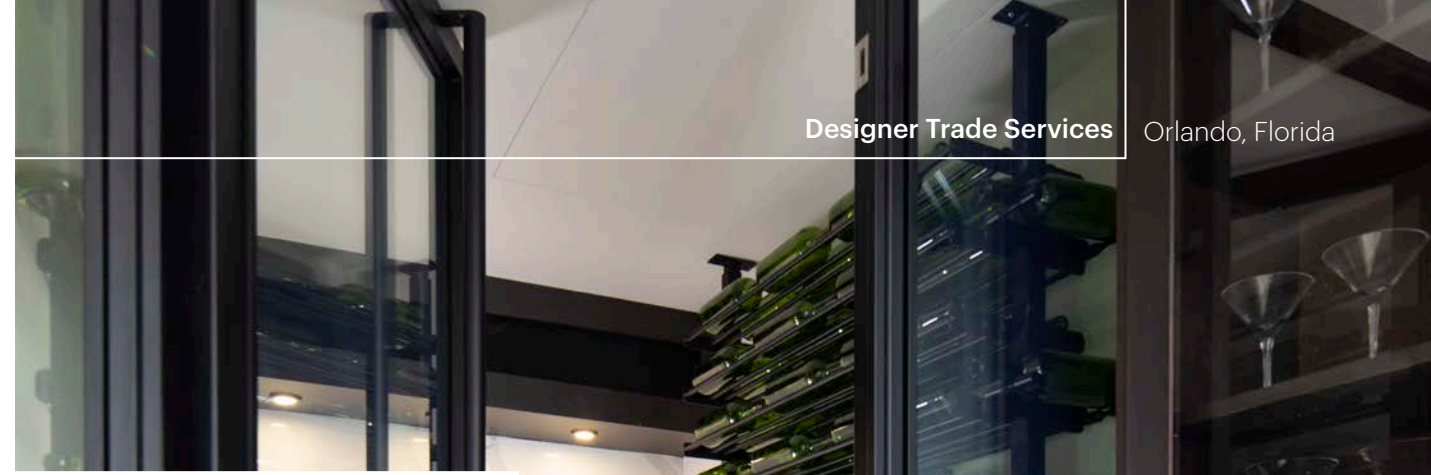


Evolution Low Profile | Double Bottle Depth / Triple Bottle Width



90

With its streamlined aesthetic, Low Profile naturally fits into challenging, often under used, spaces.



Evolution Low Profile | Mixed Bottle Depth

207

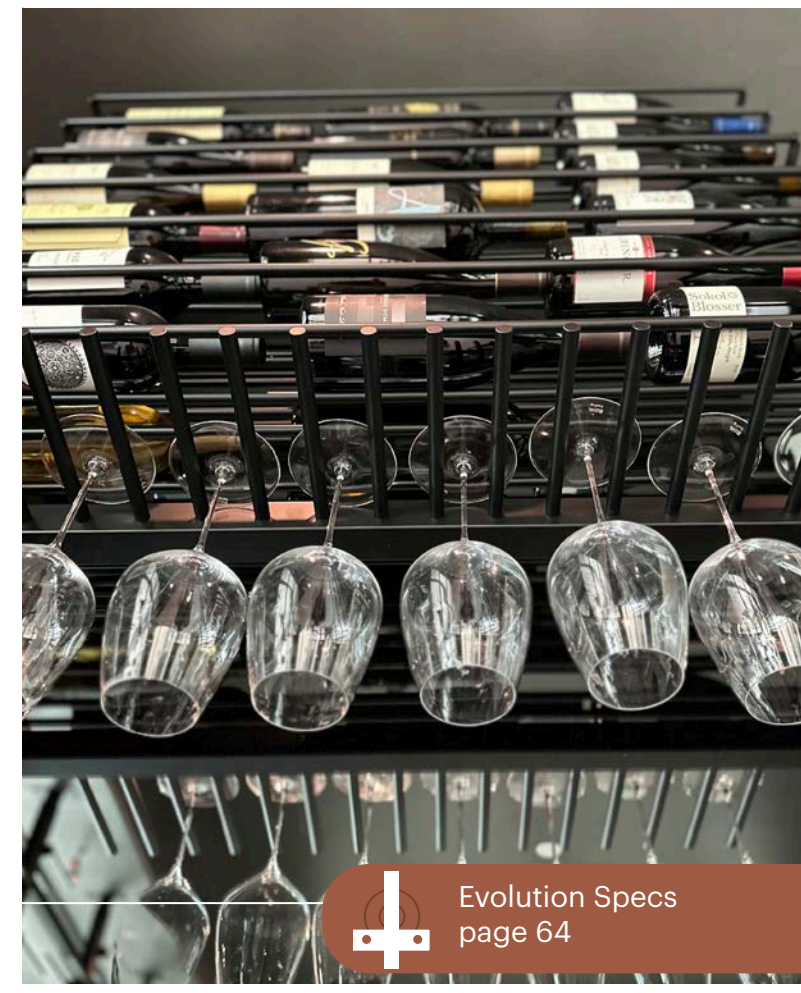


Evolution Low Profile | Triple Bottle/ Three Bottle Wide

440



While the Evolution collection is a stunner on its own, its draw intensifies when paired with another series. Here, it's expertly joined by Vino Series Stemware, creating a harmonious and captivating display.



Evolution Specs page 64

2022 Both The New American Home and Remodel projects feature VintageView wine cellars. The latter, a compelling Low Profile display (PICTURED). The former, showing off the new Luxe edition of the W Series Wine Rack.

[2023]

HELIX

In the most minimalist way imaginable, the Helix Wine Rack hangs wine bottles off walls and posts to create distinctive custom wine storage systems, starting at just one bottle. The helical design mimics one of nature's strongest structures, creating ultra-lightweight and incredibly durable bottle storage.



— = finish 🍷 = bottle capacity
528





Luxus Design Build Henderson, Nevada

Helix Wine Rack Post | Single Sided



224

[LEFT] Helix combines modern aesthetics with the timeless charm of classic 'Riddling Racks,' offering an innovative wine preservation method. Unveiled at The New American Home 2023, this design blends tradition with contemporary flair. [BELOW LEFT] The design's exceptional elegance makes it a striking standalone feature on accent walls. [BELOW RIGHT] A ringing endorsement, the tony Four Seasons Private Residences styles a wine cellar with Helix.



Modern Wine Display

Helix Single | Left Orientation



12



Four Seasons Residences Henderson, Nevada

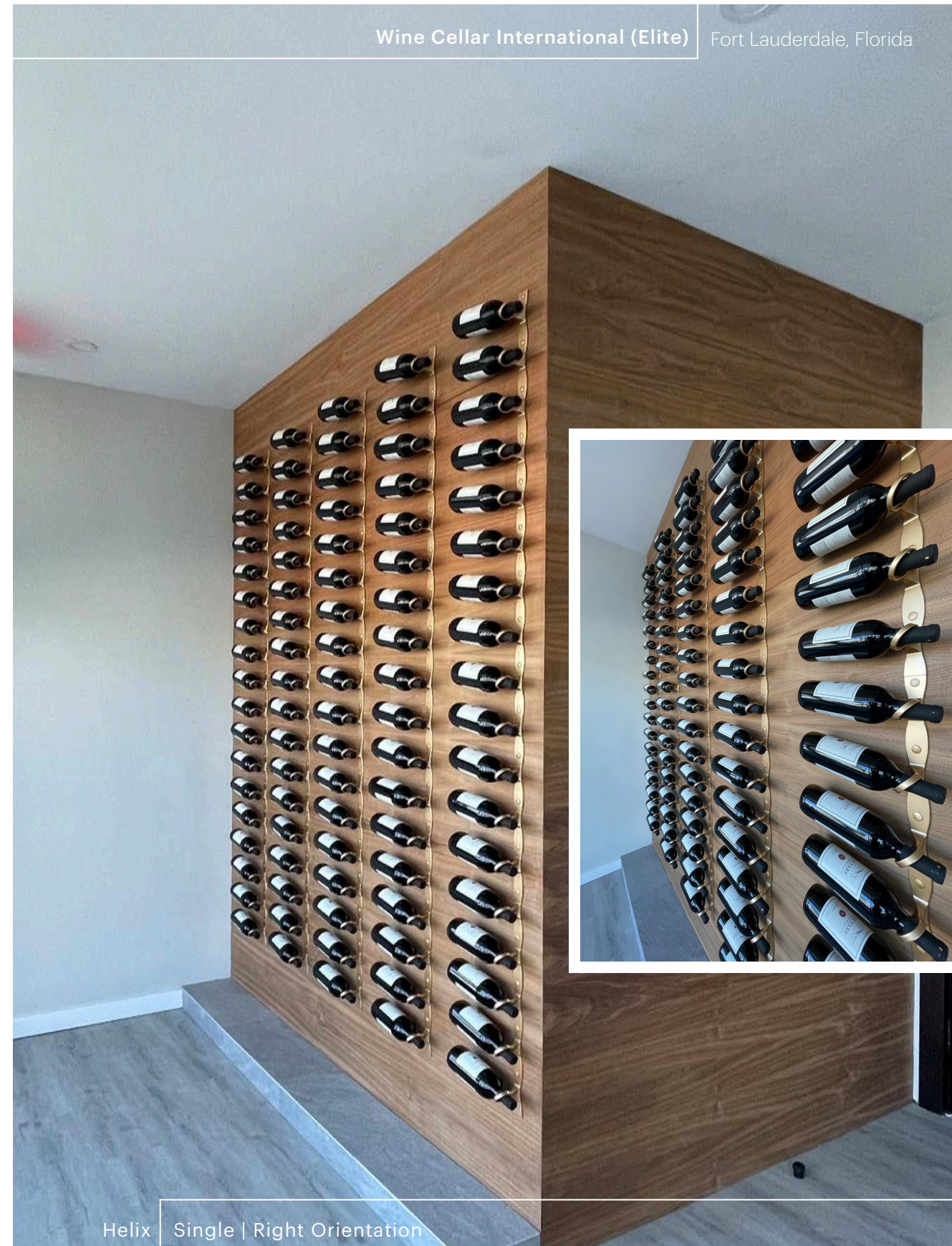
Helix Single | Right Orientation



87

2023 Helix is awarded its first seven patents, covering design and utility applications in both the US and foreign markets.

The striking presentation greets members of The Reserve Luxury Wine Vault as they enter for an event or go grab a bottle from their rented locker spaces behind.



For spaces that are yet to materialize, our 3D Services bring any visionary concept to reality. Consider the imaginative use of our Helix Wine Rack in Golden Bronze, as showcased in a bespoke arrangement under a stone staircase. Crafted to custom heights, this inventive wine storage solution harmoniously blends with architectural nuances and imaginative ideas.

W SERIES

2001

The original label forward wine rack maintains its elite status among remarkable wine cellar design professionals.

single-bottle depth

Height	Width	Bottles
4" (10.5cm)	13" (33cm)	1
1' (30.5cm)	13" (33cm)	3
2' (61cm)	13" (33cm)	6
3' (91.5cm)	13" (33cm)	9
4' (123cm)	13" (33cm)	12
1.5L 45" (114.5cm)*	15" (38cm)	9
3L-6L 30" (76.5cm)*	18"+ (45.72cm+)	4

Depth: 5-1/4" (13.5cm)
*Depth: 8" (20.32)

double-bottle depth

Height	Width	Bottles
4" (10.5cm)	13" (33cm)	2
1' (30.5cm)	13" (33cm)	6
2' (61cm)	13" (33cm)	12
3' (91.5cm)	13" (33cm)	18
4' (123cm)	13" (33cm)	24
1.5L 45" (114.5cm)*	15" (38cm)	18

Depth: 8-1/2" (22cm) *Depth: 10" (25.5cm)

triple-bottle depth

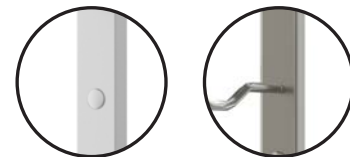
Height	Width	Bottles
4" (10.5cm)	13" (33cm)	3
1' (30.5cm)	13" (33cm)	9
2' (61cm)	13" (33cm)	18
3' (91.5cm)	13" (33cm)	27
4' (123cm)	13" (33cm)	36

Depth: 12" (30.5cm)

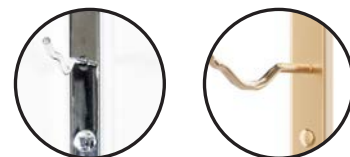
Finishes



Brushed Nickel (Pro) Matte Black (Pro)(Luxe*)



Cool Gray (Pro*) Gunmetal (Luxe)



Chrome (Luxe) Golden Bronze (Luxe)

*special order; lead times apply

SCAN FOR BILT. 3D INSTRUCTIONS



POWERED BY BILT INTELLIGENT INSTRUCTIONS®

Floor-to-Ceiling Application:
The W Series Wine Rack Frame —cut-to-fit on site— comes in standard 10' (305cm), 12' (366cm), and 15' (457.5cm) heights for floor-to-ceiling installation.

W SERIES ISLAND DISPLAY RACK

2009 The modern workhorse wine rack for bespoke retail design, creating engaging shopping spaces.

Height	Extensions	Bottles
IDR 3*	Base	180
44 3/4" (114cm)	Base + 1	360
44 3/4" (114cm)	Base + 2	540
44 3/4" (114cm)	Base + 3	720
IDR 4*	Base	234
55 3/4" (142cm)	Base + 1	468
55 3/4" (142cm)	Base + 2	702
55 3/4" (142cm)	Base + 3	936
IDR 7**	Base	288
86 3/4" (220.5cm)	Base + 1	576
86 3/4" (220.5cm)	Base + 2	864
86 3/4" (220.5cm)	Base + 3	1152

Depth: 13-3/4" (35cm) single sided* / 26" (66cm) double sided

* IDR 3s and 4s available in one-sided, half units
** IDR7s available in a 378-bottle XL configuration

Modular Extensions

Extension kits allow for modular growth of any IDR racking option.

Base	40-1/2" (103cm)
Base + Ext	79-1/2" (202cm)
Base + 2 Ext	118-1/2" (301cm)
Base + 3 Ext	157-1/2" (400cm)

Finishes



Matte Black



Brushed Nickel

VINO SERIES

2015 The most trusted peg system in the world offers sophistication, scalability, and confidence to install directly into drywall.

single-bottle depth
(standard or magnum bottles)

Height	Width
5" (13cm)	13" (33cm)
1.5L 5" (13cm)	15" (38.5cm)

Depth: 4" (10.5cm)
4-1/2" (11.5cm) with Drywall Collars
capacity: 1

double-bottle depth

Height	Width
5" (13cm)	13" (33cm)
1.5L 5" (13cm)	15" (38.5cm)

Depth: 8" (20.5cm)
8-1/2" (21.5cm) with Drywall Collars
capacity: 2

triple-bottle depth

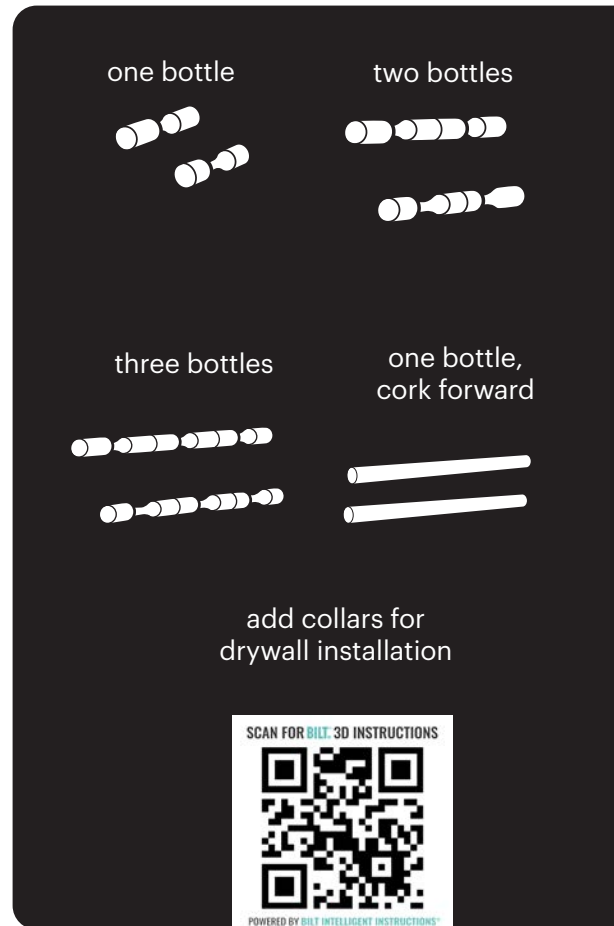
Height	Width
5" (13cm)	13" (33cm)

Depth: 12" (30.5cm)
12-1/2" (32cm) with Drywall Collars
capacity: 3

cork forward

Height	Width
5" (13cm)	3" (8cm)
1.5L 5" (13cm)*	3 1/2" (9cm)

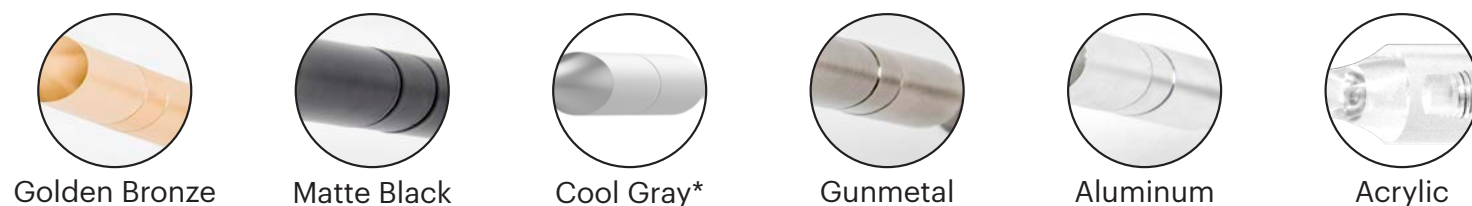
Depth: 13" (33cm) capacity: 1
*Depth: 15" (38.5cm) capacity: 1 (1.5L)
depth includes bottle overhang



Floor-to-Ceiling Application: The Vino Series Post System — cut-to-fit on site — comes in the following standard heights:

5' (152.5cm)
10' (305cm)
12' (366cm)
15' (457.5cm)

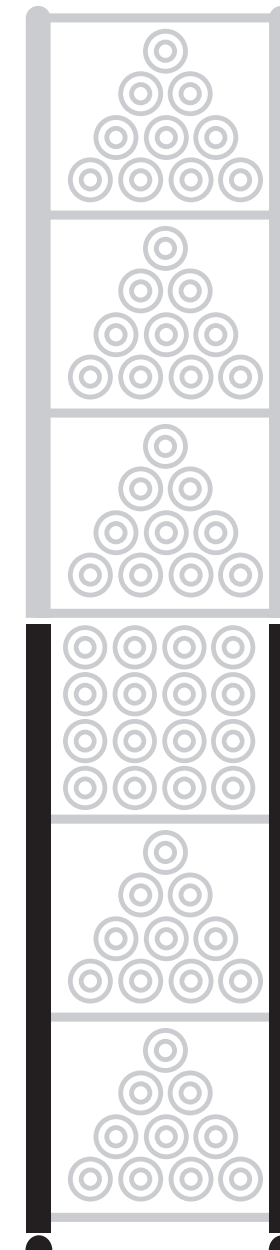
Finishes *special order; lead times apply



CASE & CRATE

2017

Upscale Locker or Bin storage for the largest bottle capacity requirements.



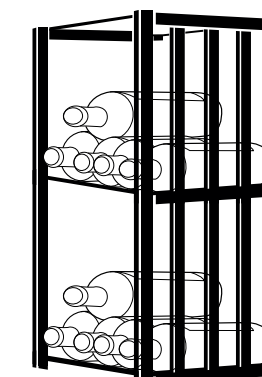
Bin/Locker 3

Height	Width	Depth	Bottles*
Base			
42 3/4" (109cm)	14 3/4" (37.5cm)	15" (38cm)	48
Base + 1 Ext			
42 3/4" (109cm)	28 3/8" (73cm)	15" (38cm)	96
Base + 2 Exts			
42 3/4" (109cm)	42" (107cm)	15" (38cm)	144

Bin/Locker 6

Height	Width	Depth	Bottles*
Base			
83 1/4" (211.5cm)	14 3/4" (37.5cm)	15" (38cm)	96
Base + 1 Ext			
83 1/4" (211.5cm)	28 3/8" (73cm)	15" (38cm)	192
Base + 2 Exts			
83 1/4" (211.5cm)	42" (107cm)	15" (38cm)	288

Profile



Finishes

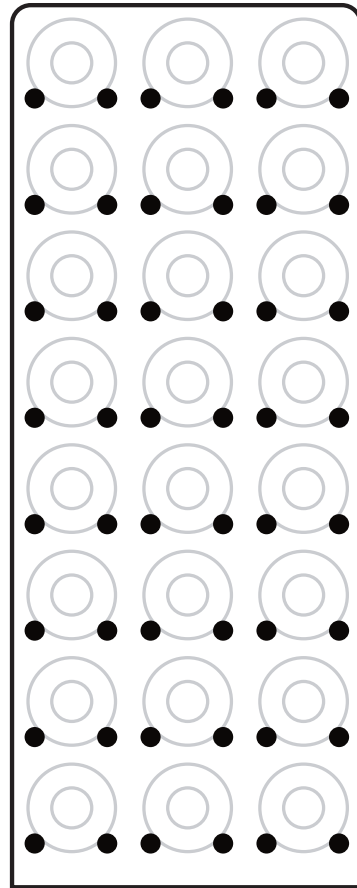


Matte Black

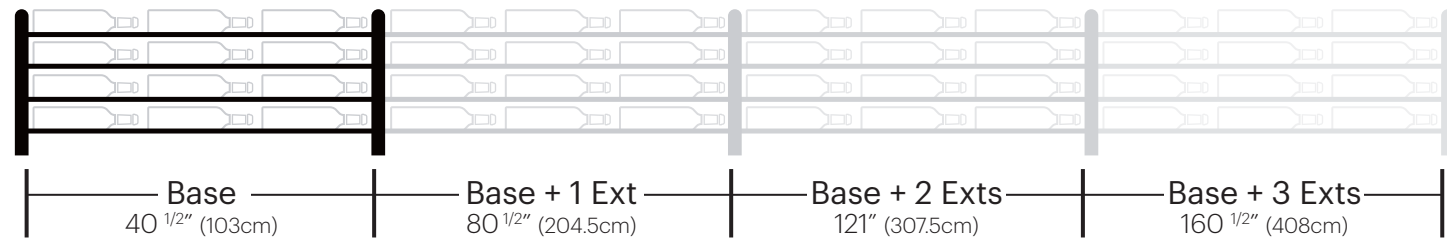
*storing magnums decreases capacity

EVOLUTION WINE TOWER

2013 Sophisticated minimalism blending steel and acrylic into beautiful freestanding wine storage.



Height	Extensions	Depth	Bottles
Wine Tower 47			
47" (119.5cm)	Base	12 1/8" (31cm)	81
47" (119.5cm)	Base + 1	12 1/8" (31cm)	162
47" (119.5cm)	Base + 2	12 1/8" (31cm)	243
47" (119.5cm)	Base + 3	12 1/8" (31cm)	364
Wine Tower 72			
72" (183cm)	Base	12 1/8" (31cm)	126
72" (183cm)	Base + 1	12 1/8" (31cm)	252
72" (183cm)	Base + 2	12 1/8" (31cm)	378
72" (183cm)	Base + 3	12 1/8" (31cm)	504
Wine Tower 92			
92" (234cm)	Base	12 1/8" (31cm)	162
92" (234cm)	Base + 1	12 1/8" (31cm)	324
92" (234cm)	Base + 2	12 1/8" (31cm)	506
92" (234cm)	Base + 3	12 1/8" (31cm)	648



Finishes



Acrylic/
Matte Black

Acrylic/
Cool Gray*

Acrylic/
Golden Bronze

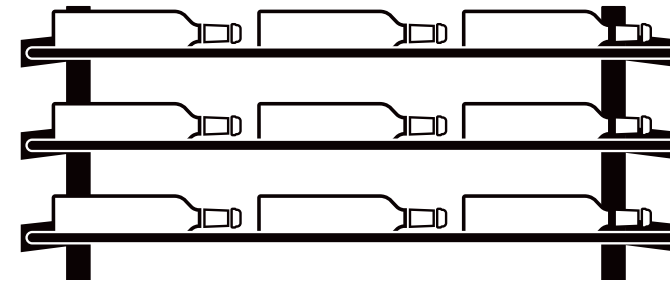
Acrylic/
Chrome

*special order; lead times apply

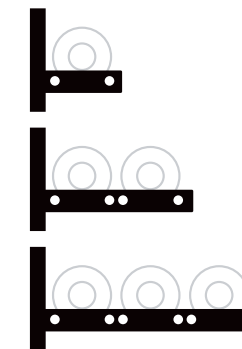
EVOLUTION WINE WALL

2018

Industrial chic design that provides the most height, depth, and width options to scale to any custom needs.



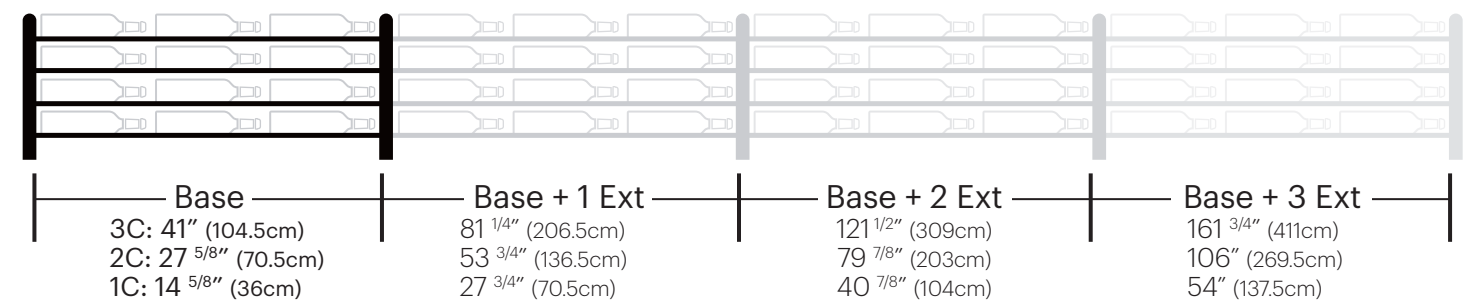
Height	Width	Bottle Depth	Bottles
5"	1C, 2C, 3C	1D, 2D, 3D	3, 6, 9
15"	1C, 2C, 3C	1D, 2D, 3D	9, 18, 27
30"	1C, 2C, 3C	1D, 2D, 3D	18, 36, 54
45"	1C, 2C, 3C	1D, 2D, 3D	27, 54, 81



Bottle Depth	
single (1D)	4-1/8" (10.5cm)
double (2D)	8-1/8" (21cm)
triple (3D)	12-1/8" (31cm)

Floor-to-Ceiling Application: The Wine Wall Post Systems — cut-to-fit on site — comes in standard 5' (152.5cm), 10' (305cm), 12' (366cm), and 15' (457.5cm) heights for floor-to-ceiling installation.

**Depending on orientation, Mounting Bases can add 1-1/2" (4cm) width or 3/8" (1cm) depth (single depth only)



Finishes



Chrome/
Matte Black

Golden Bronze/
Matte Black

Matte Black

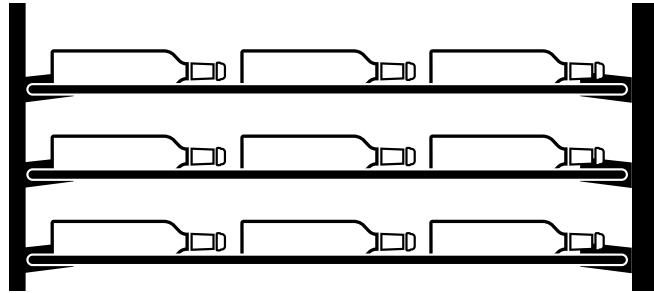
Cool Gray*

*special order; lead times apply

EVOLUTION LOW PROFILE

2020

A superior designed floor-to-ceiling wine rack that begins at an impossible 3" (8cm) of total depth.

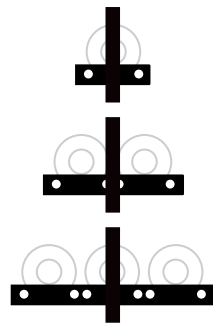


Height	Width**	Depth	Bottles
5"	1C, 2C, 3C	1D, 2D, 3D	3,6,9
15"	1C, 2C, 3C	1D, 2D, 3D	9,18,27
30"	1C, 2C, 3C	1D, 2D, 3D	18,36,54
45"	1C, 2C, 3C	1D, 2D, 3D	27,54,81

SCAN FOR BILT. 3D INSTRUCTIONS



POWERED BY BILT INTELLIGENT INSTRUCTIONS



Bottle Depth

single (1D)**	3" (8cm)
double (2D)	7" (18cm)
triple (3D)	11" (28cm)

Floor-to-Ceiling Application: The Low Profile Post System — cut-to-fit on site — comes in standard 5' (152.5cm), 10' (305cm), 12' (366cm), and 15' (457.5cm) heights for floor-to-ceiling installation.

**Mounting Bases add 1-1/2" (4cm) to width or depth (1D only) depending on orientation.

Base	Base + 1 Ext	Base + 2 Exts	Base + 3 Exts
3C: 43 1/2" (110.5cm)	84" (213.5cm)	124 7/8" (317.5cm)	165 3/4" (421cm)
2C: 29 3/4" (76cm)	57 1/4" (145.5cm)	84 3/4" (215.5cm)	112 1/4" (285.5cm)
1C: 16 3/4" (42.5cm)	31 1/4" (79.5cm)	45 3/4" (116.5cm)	60 1/4" (153cm)



Chrome/
Matte Black



Golden Bronze/
Matte Black



Matte Black



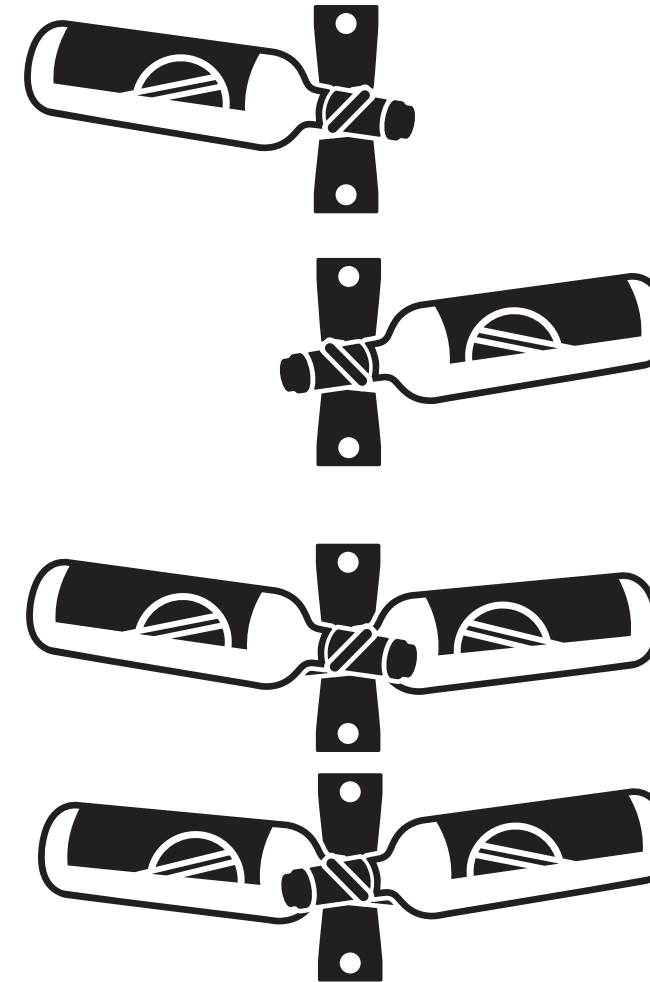
Cool Gray*

*special order; lead times apply

HELIX WINE RACK

2023

Elegant, minimal wine racking that mimics one of the most efficient structures in nature.



Minimal (single-bottle depth)
750ml or Mag bottles

Height	Width	Bottles
5" (13cm)	13" (33cm) 750ml	1
15" (38.5)	15" (38.5cm) Mag	3
Depth: 3 1/4" (8.5cm)		

Configurations: Left, Right

Balanced (dual-bottle depth) 750ml bottles

Height	Width	Bottles
5" (13cm)	13" (33cm) 750ml	2
15" (38.5)	13" (33cm) 750ml	6
Depth: 5 1/4" (13.5cm)		

Configurations: Standard, Mirror

Floor-to-Ceiling Application: The Helix Wine Rack Post System — cut-to-fit on site — comes in standard 5' (152.5cm), 10' (305cm), 12' (366cm), and 15' (457.5cm) heights for floor-to-ceiling installation.

Finishes



Matte Black



Cool Gray



Golden Bronze

Resources

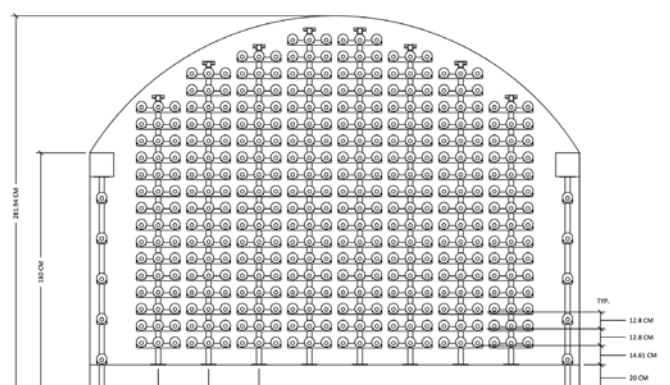
Design

Custom

The flexible nature of each product creates thousands of unique configurations. Our in-house designers are experts in understanding how to pick the right mix of products to elevate your space to your unique requirements.

Most services are free for members of the trade and DIYers. CAD files available on request as well. Let us help inform your elegant project.

The Process



2D CAD layout
(COMPLIMENTARY, 3-5 business days)



3D photo-like renderings
(premium, 3-5 business days)



Final installation roadmap upon request

Services

Our stellar service promise will ensure you receive the figurative white-glove treatment from the time an order is imagined to the day it's delivered.

Quick Fulfillment

Most products ship same week.

Superior Quality

Every wine rack backed with a lifetime warranty.

Tactful Training

Consider us your expert consultant.

Inspiration in Person

Let us direct you to VintageView installations nearby.

Expert Referrals

We have amazing wine cellar building partners in most major cities in the United States, Canada, and Europe.

Even with infinite custom cellar possibilities available using VintageView's elegant, modular systems, certain projects call for something even more special. For more than two decades, we've put the same effort and attention to detail to build custom metal work for our beloved clients.

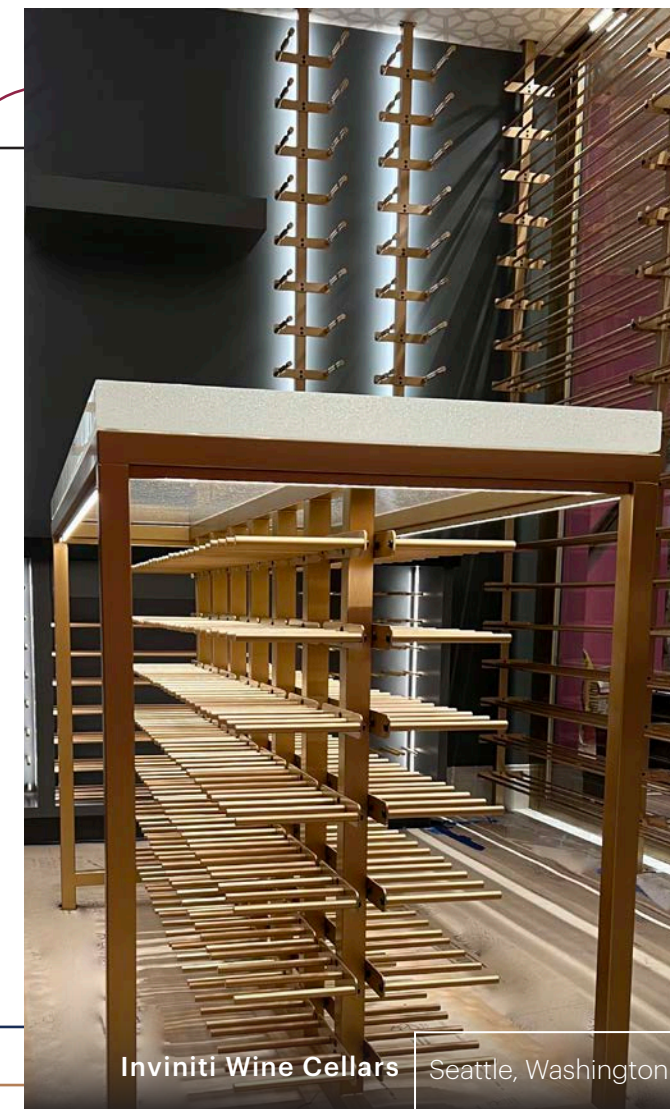
Semi Custom

Standardized pricing with a quick design process for items we know you want, but we don't stock. Delivered in 10 to 12 weeks of order.

Examples: Matte Black Luxe W Series Wine Rack; Cool Gray in W Series, Vino Series, Case & Crate, and Wine Wall products; Case & Crate Locker or Bin 1 heights; Any standard racking in Chrome or Gunmetal plating, or Golden Bronze powder coat; Vino Series Acrylic Panels (wall or floor-to-ceiling mounted)

Full Custom

Take your imagination to the max! Each project will be custom designed, quoted, and fabricated (delivered in as few as 99 days).



Inviniti Wine Cellars | Seattle, Washington

Day 1
Vision Discussed

Day 5
Feasibility Confirmed

Day 14
Design & Quote Returned

Day 15
Client Sign Off

Day 99
Custom Wine Rack Delivered



GET IN TOUCH

866.650.1500

VintageView Headquarters

4690 Joliet St., Denver, CO 80239

www.vintageview.com/design2024



Builder: Cottonwood Custom Homes
Photo: Kylie Fitts